

## BIODIVERSITY SURVEY OF COELOMYCETES IN BURMA

---

### Maung Mya Thaug

5482 Los Robles, La Verne, CA 91750-1643, USA

#### Abstract

Coelomycetes on plants in monsoon ecosystem of Burma were collected and identified using a traditional taxonomic method. They comprised 638 specimens representing 61 form genera in 343 different taxa. The genera frequently collected with salient sp. diversity are *Asteromella*, *Colletotrichum*, *Pestalotiopsis*, *Phoma*, *Phomopsis*, *Phyllosticta* and *Septoria* for which a biodiversity index is identified and developed. Their frequency difference is also analysed. A host index is appended. Collections are held in Herb. IMI and UC (= LAM).

M.M. Thaug (2008). Biodiversity survey of coelomycetes in Burma. *Australasian Mycologist* 27 (2): 74-110.

---

#### Introduction

This paper surveys biodiversity of coelomycetes in Burma on plants in tropical, dry to wet, monsoon ecosystem. It collected and identified specimens, following a traditional taxonomic approach. The survey was neither selective nor intensive in scope while spanning a gathering period of seven years. In addition, it annotated and consolidated earlier records of Butler (1918), Butler & Bisby (1931), Mundkur & Kheswalla (1942) and Rhind & Seth (1945) to generate a comprehensive, contemporary inventory.

*Colletotrichum gloeosporioides* (Penz.) Penz. & Sacc., *C. gossypii* Southw., *C. nigrum* Ellis & Halst. and *Phoma annullata* Pons (Anamorphic *Leptosphaeria sacchari* Breda de Haan) were probably the first coelomycetes reported as present in Burma, causing anthracnose of rubber, cotton (bolls) and chilli, and ring spot of sugarcane, respectively (Butler 1918). *C. gloeosporioides* is also responsible in part for secondary leaf fall of mature rubber which weakens the plants, leading to dieback. *C. falcatum* Went completely devastated in 1969 about 10% of sugarcane planted in Burma (Thaug 1970b).

#### Materials and Methods

Specimens studied were identified consulting CABI database (<http://www.cababstractsplus.org/dfb/reviews.asp?action=browseByDate&>

[openMenu=browseByDate&year=2004](http://www.cababstractsplus.org/dfb/reviews.asp?action=browseByDate&year=2004)) and the references within. Some were identified to genus only due to several constraints and a desire to eschew sp. proliferation. All specimens are listed under each sp. regardless of their identification status.

Specimens were first examined *in situ* through a binocular dissecting microscope for gross morphological characters, and then cut fresh with a razor blade for freehand sections, and the best sections selected intact, or teased or squashed in water, for examination under a binocular research microscope. Lactic acid clearing medium was also used, followed by warming to remove air bubbles and to speed up clearing action. Over 30 spores were measured to obtain a median of size in range. Specimens deposited in Herb. IMI and UC (= LAM) are also included.

Herbarium codes are taken from the Index Herbariorum database (<http://scweb.nybg.org/science2/IndexHerbariorum.asp>), author abbreviations for plant names from the IPNI database (<http://www.ipni.org/ipni/plantnamesearch.do>) and fungus names from the Index Fungorum database (<http://www.indexfungorum.org/Names/Names.asp>). Vernacular names, though not specific but sometimes descriptive, are rendered when available to help deficiencies in host nomenclature.

A form-class such as *Fungi Imperfecti* being neither phytocentric nor natural, or redundant (Taylor 1995), coelomycetes determined and/or recorded as present in Burma are not assigned thereto and inventoried below in alphabetical order together with their hosts, locations, dates, and herbarium accession numbers, followed by a host index in appendix.

## Coelomycetes

Anamorph spp:

1. 1. ***Ampelomyces quisqualis*** Ces. ex Schlecht. (≡ *Cicinobolus cesatii* de Bary as *cicinobolus*) on *Erysiphales* on *Sechium edule.*, Maymyo, 27-x-1971 (IMI 161578). Note: it is also found in Burma on powdery mildews (*Oidium*, *Oidiopsis*, *Ovulariopsis*) parasitising *Alpinia allughas*, *Argemone mexicana*, *Baliospermum axillare*, *Bougainvillea spectabilis*, *Brassica* sp., *Capsicum annuum*, *Carica papaya*, *Cassia tora*, *Chrozophora plicata*, *Citrus* sp., *Coccinia indica*, *Codiaeum variegatum*, *Cucurbita maxima*, *C. pepo*, *Eclipta alba*, *Euphorbia hirta*, *Glochidion* sp., *Helianthus annuus*, *Hevea braziliensis*, *Heliotropium indicum*, *H. supinum*, *Hibiscus esculentus*, *H. ficulnens*, *Impatiens balsamina*, *Ipomoea reniformis*, *Lagenaria vulgaris*, *Lagerstroemia indica*, *Leptadenia reticulata*, *Lycopersicum esculentum*, *Melia azedarach*, *Nicotiana tabacum*, *Ocimum gratissimum*, *Phaseolus mungo*, *Phyllanthus nanus*, *Piper betle*, *Pisum arvense*, *P. sativum*, *Psoralea corylifolia*, *Pyrus communis*, *Sesamum indicum*, *Solanum melongena*, *Tamarindus indica*, *Tectona grandis*, *Tephrosia purpurea*, *Tinospora cordifolia*, *Urena lobata*, *Vigna catjang*, and *Ziziphus jujuba*.
2. 1. ***Aplosporella*** (= *Haplosporella*) ***hesperedica*** Speg. on stem of *Citrus medica* var. *acida.*, Nyaungbinzauk Village, east of Myitnge, 9-xi-1971 (IMI 166361a); also as ***Pleosphaeropsis*** sp., Mandalay (DAB 1940).
2. ***Aplosporella*** sp. on *Caryota urens*, Mandalay, 15-x-1972 (IMI 170561).
3. ***Aplosporella*** sp. on Orchid, Toungoo, 10-i-1978 (LAM 220429).
3. 1. ***Aposphaeria citricola*** Penz. & Sacc. on *Citrus* sp., Madaya, 20-i-1973 (IMI 172864b).

2. ***Aposphaeria*** spp. in spots on leaf stalk of frond palm-like plant, Kan-daw-gyi Lakeside, Rangoon, 05-iv-1973 (IMI 175722) and *Elaeis guineensis*, Rangoon, 20-x-1979 (LAM 220870). Note: pycnidia dark, round, erumpent, single, papillato-ostiolate; conidia hyaline, 1-celled, elongate to globose, vibratory, 3.5-4 x 1.5-2 um.
4. 1. ***Aschersonia badia*** Pat. on scale insects on leaves of bamboo, Pegu Yoma (Butler & Bisby 1931, Rhind & Seth 1945).
2. ***Aschersonia blumenaviensis*** Henn. on scale insects associated with ***Septobasidium*** on *Streblus asper*, Kalewa, 12-xii-1972 (IMI 172445).
3. ***Aschersonia cinnabarina*** Henn. on leaves of *Tectona grandis*, Lower Burma (Rhind & Seth 1945).
4. ***Aschersonia cubensis*** Berk. & M.A. Curtis being part of a mixture of fungi identified as ***Hypocrea variabilis*** on scale insects on leaves from Pegu, Burma (K[M] 134242 ex herb. F. Currey). Note: it is most probably a mixture of ***A. cubensis*** and its teleomorph ***Hypocrella epiphylla*** Massee, or with ***Hypocrella mollii*** Koord.
5. ***Aschersonia placenta*** Berk. state of ***Hypocrella raciborskii*** Zimm. on *Dalbergia ovata*, Kandawgyi Garden, Rangoon, 9-i-1975 (IMI 191507).
6. ***Aschersonia tamurai*** Henn. on *Rubiaceae*, Kyaikhtiyo Range, 23-xi-1975 (IMI 199739b); *Streblus asper*, University of Rangoon Campus, Rangoon, 25-i-1975 (IMI 191508).
7. ***Aschersonia*** spp. on *Baccaurea sapida*, Sinthawt village, east of Yezin, 17-v-1977 (LAM 220113); *Careya arborea*, Tavoy, 12-i-1978 (LAM 220428); *Helicteres elongata*, North of Kyaukchaw, near Mandalay, 12-xi-1974 (IMI 190423a); and *Zingiberaceae*, Kyaikhtiyo Range, 23-xi-1975 (LAM 220120).
5. 1. ***Ascochyta betae*** Prill. & Delacr. on *Beta vulgaris*, Vegetable Market,

- Rangoon, 29-ii-1980 (LAM 220904b). Note: conidia pale, 1-septate, oblongish with rounded ends, 7.5-9.2 x 2.5-3.0  $\mu\text{m}$  (type sp. is from stems of *Beta vulgaris*, and reported with conidia, 9-12 x 2.5-3.0  $\mu\text{m}$ .). Cf. *A. beticola* Prill. & Delacr. with conidia 14 x 4  $\mu\text{m}$ .
2. *Ascochyta citri* Penz. on leaves of *Citrus decumana* and *C. medica*, Maymyo (Rhind & Seth 1945).
  3. *Ascochyta erythrinae* Elisei on *Erythrina* sp., Maymyo, 27-xii-1972 (IMI 175741).
  4. *Ascochyta gerberae* Maffei on *Gerbera jamesonii*, Aungban, S.S.S., 12-ii-1973 (IMI 175738); 27-xii-1979 (LAM 220899b). Note: conidia pale olivaceous, ellipsoideo-oblong or suboblong, 1(-2)-septate, slightly constricted or not at the septa, 13-16.5(-18.5) x 3  $\mu\text{m}$ .
  5. *Ascochyta melongenae* Padman. on *Solanum melongena*, Namsan, Loilem District, S.S.S., 16-viii-1972 (IMI 170568).
  6. *Ascochyta piricola* Sacc. on *Pyrus malus*, Maymyo, 23-ii-1973 (IMI 173553).
  7. *Ascochyta pisi* Lib. on *Pisum sativum*, Taunggyi, S.S.S., 4-i-973 (IMI 173548a); (Sutton 1980).
  8. *Ascochyta scotinospora* Sousa da Câmara on bamboo, Maymyo, 20-i-1974 (IMI 185673a); *Bambusa polymorpha*, Zayatgyi (Toungoo), 20-xi-1973 (IMI 180790).
  9. *Ascochyta sorghi* Sacc. ( $\equiv$  *Ascochyta sorghina* Sacc.) on *Sorghum nigricans* var. *angolense* (= Saccoline sorghum), Patheingyi near Mandalay, 10-x-1970 (IMI 152117); *Sorghum* sp., Mandalay, 12-x-1971 (IMI 161269); Myitkyina, 10-xi-1971 (LAM 220946); Burma (Punithalingam 1979).
  10. *Ascochyta* spp. on *Artabotrys burmanicus*, Mandalay, 14-xii-1973 (IMI 191522b); *Mesua ferrea* (Vernacular = *Gan-gaw*), Mandalay, 27-x-1971 (IMI 161575b).
  6. 1. *Asteromella mali* (Briard) Boerema on *Prunus armeniaca*, Maymyo, 15-x-1972 (IMI 170558b); *Prunus communis*, Mogaung, Kachin State, 16-i-1978 (LAM 220410b).
  2. *Asteromella quercifolii* C. Massal on *Quercus mespilifolia*, Botanical Garden, Maymyo, 12-ii-1974 (IMI 183215b). Note: hairy pycnidium with thick dark upper wall around its ostiole and irregularly globose, hyaline conidia.
  3. *Asteromella tectonae* (Syd., P. Syd. & E.J. Butler) Aa ( $\equiv$  *Phyllosticta tectonae* Syd., P. Syd. & E.J. Butler) on leaves of *Tectona grandis*, Madaya (Rhind & Seth 1945).
  4. *Asteromella terminaliae* (Henn.) Aa ( $\equiv$  *Phyllosticta catappae* Syd.) on leaves of *Terminalia catappa*, Maymyo, collector E.J. Butler, 19-i-1908 (Herb. Syd., Herb. Crypt. Ind. Orient. 1722 (S) (Aa & Vanev 2002)); Mandalay, 10-x-1972 (IMI 170571b); (Rhind & Seth 1945).
  5. *Asteromella* sp. on *Averrhoa carambola*, Sagaing, 16-ii-1975 (IMI 192813). Note: pycnidia subcuticular to subepidermal, globose, yellowish to darkish brown, inostiolate, 48-52  $\mu\text{m}$  diam. in greyish white leafspots with tiny yellowish bodies.
  6. *Asteromella* sp. on *Bombax malabaricum*, Mandalay, 29-i-1973 (IMI 172878b).
  7. *Asteromella* sp. on *Bougainvillea spectabilis*, Mandalay, 19-xi-1974 (LAM 220828b).
  8. *Asteromella* sp. on *Callistephus chinensis*, Vegetable Bazaar, Rangoon, 2-xi-1979 (LAM 220775b).
  9. *Asteromella* sp. on *Caryota urens*, Kya-in-seikkyi (Delta Area), 10-iv-1975 (IMI 194479a).
  10. *Asteromella* sp. on *Cassia alata*, Rangoon, 5-xii-1979 (LAM 220704b).
  11. *Asteromella* sp. on *Craibiodendron henryi*, Botanical Garden, Maymyo, 12-ii-1974 (IMI 183223).

12. **Asteromella** sp. on *Cydonia cathayensis*, Mandalay, 21-xi-1972 (IMI 175742). Note: pycnidium with tiny, yellowish, sphaeroid and rod-shaped conidia.
13. **Asteromella** sp. on *Dalbergia cultrata*, North of Kyaukchaw en route Maymyo, 12-ii-1974 (IMI 183221). Cf. **A. sissoo** (Diedicke) Aa on *D. sissoo* from India.
14. **Asteromella** sp. on *Euryclides amboinensis*, Rangoon, 29-ix-1979 (LAM 220634b).
15. **Asteromella** sp. on *Gardenia obtusifolia*, Yezin, 20-ix-1977 (LAM 220873).
16. **Asteromella** sp. on *Hevea brasiliensis*, Mingaladon, 25-xi-1979 (LAM 220737b).
17. **Asteromella** sp. on *Jatropha gossypifolia*, Amarapura, 2-x-1979 (LAM 220735b).
18. **Asteromella** sp. on *Lagerstroemia villosa*, Botanical Garden, Maymyo, 12-ii-1974 (IMI 183246a).
19. **Asteromella** sp. on *Mesua ferrea* (Vernacular name = *Gan-gaw*), Mandalay, 27-x-1971 (IMI 161575a).
20. **Asteromella** sp. on *Milusa velutina*, Natmauk, 27-xii-1977 (LAM 220871).
21. **Asteromella** sp. on *Musa sapientum* var. *rubra*, Rangoon, 4-iv-1973 (IMI 175719a) in grey leafspots with pycnidia bearing tiny, yellowish bodies (spores/spermatia). Cf. **Asteromella paradisiaca** Petr.
22. **Asteromella** sp. on *Pentacme siamensis* (Vernacular = *In-gyin*), Maymyo, 28-i-1974 (IMI 182581b).
23. **Asteromella** sp. on *Roystonea elata*, Rangoon, 25-xi-1979 (LAM 220763b).
24. **Asteromella** sp. on *Strychnos* sp., Kyauktaga, near Toungoo, 20-iv-1975 (IMI 194478a). Cf. **A. strychni** (Allescher) Aa and Vanev reported on *S. stuhlmannii*.
25. **Asteromella** sp. on *Terminalia chebula*, Botanical Garden, Maymyo, 15-ii-1974 (IMI 183219). Cf. **A. terminaliae** (Henn.) Aa from *T. baumiana*.
26. **Asteromella** sp. on *Xylia dolabriformis*, Botanical Garden, Maymyo, 15-ii-1974 (IMI 183220). Note: pycnidium full of tiny grain-like bodies (spermatia/spores).
7. 1. **Bartalinia robillardoides** Tassi on *Acacia leucophloea*, Mandalay, 1-ix-1972 (IMI 170074); *Bignonia magnifica*, Madaya, 10-iv-1971 (IMI 172440b); *Eugenia* sp., Mandalay 24-ii-1971 (IMI 172455b); Burma (Sutton 1980).
8. 1. **Ceuthospora phacidioides** Grev. on *Murraya* sp., Sagaing, 20-xi-1973 (IMI 180777b).
9. 1. **Coleophoma** spp. on *Acanthus ilicifolius*, Labutta, 15-iv-1975 (IMI 194457); *Artabotrys burmanicus*, Mandalay, 14-xii-1973 (IMI 191522a). Note: pycnidia intraepidermal to subcuticular, depressed-globose, inostiolate, usually solitary with thickened 'roofs' (clypeus); conidia aseptate, hyaline, oblongo-cylindric, 11-15(-18.5) x 3.7  $\mu\text{m}$ , borne on short, flask-shaped, sporogenous cells lining the inner surface of the pycnidia.
10. 1. **Colletogloeum feroniae** (T. S. Ramakr. & K.Ramakr.) Sutton ( $\equiv$  *Septogloeum feroniae* T. S. Ramakr. & K.Ramakr.) on *Feronia elephantum*, Yamethin, 20-xii-1977 (LAM 220550); *F. limonia*, Mandalay, 11-x-1971 (IMI 164829); (Rhind & Seth 1945). Note: conidia subhyaline, 1-4 septate, 24-45 x 3-6  $\mu\text{m}$  or 0-septate, straight, flexous, obclavate, 33 x 4  $\mu\text{m}$ .
11. 1. **Colletotrichum capsici** (Syd.) E.J. Butler & Bisby ( $\equiv$  *Vermicularia capsici* Syd.) on:
1. *Albizia kalkora* Prain or *lebbek* Benth. (Vernacular = *Koke-ko*), Mandalay, 30-xii-1972 (IMI 175744). Cf. **C. lebbek** (Syd.) Petr.
2. *Araceae* (Vernacular = *Thahtay gamon*), Letsekanyut, Mandalay, 4-x-1972 (IMI 170554).

3. *Bougainvillea spectabilis*, Mandalay, 28-ix-1973 (IMI 180197b); Taungdwingyi, 1-ii-1974 (IMI 185667b).
  4. *Capparis* sp., Mandalay, 10-x-1973 (IMI 180201).
  5. *Capsicum annum*, causing dieback, Burma (Butler 1918); attacking stem and fruits, Mandalay, reported as *Gloeosporium piperatum* Ell. & Ev. (Rhind & Seth 1945).
  6. *Dahlia* sp., Rangoon, 5-xii-1979 (LAM 220725b). Cf. *C. dahliae* M.E.A. Costa & Sousa da Câmara. Note: acervulus setose; conidia pale, falcate, pluriguttulate, 15-19.5 x 3.5-4 µm.
  7. *Dianthus chinensis*, Mandalay, 11-ii-1974 (IMI 181641), conspecific with *Vermicularia dianthi* Westend., for which the current name is *Colletotrichum dematium* (Pers.) Grove.
  8. *Piper betle* (on stem), Mandalay (New Civil Lines), 5-ix-1974 (IMI 188943).
  9. *Pithecolobium dulce*, Pyinmana, 25-xi-1971 (IMI 162841).
  10. *Quisqualis indica* L., Mandalay, 12-iv-1972 (IMI 172442b).
2. ***Colletotrichum caudatum*** Peck (≡ *Elisiella caudata* (Peck) Sacc.) on grass (?*Eulaliopsis binata*), Yankin Taung, Mandalay, 25-xi-1971 (IMI 162855); North of Kyaukchaw Village, Mandalay, 12-xi-1974 (IMI 190421); *Imperata ?cylindrica*, Mingaladon, 25-xi-1979 (LAM 220764a); Burma (Sutton 1980).
  3. ***Colletotrichum coccodes*** (Wallr.) Hughes (≡ *Colletotrichum atramentarium* (Berk. & Broome) Taubenh., *C. camelliae* Masee, *C. phomoides* (Sacc.) Chester, *C. piperatum* Ellis & Everh., *Gloeosporium alborubrum* Petch, *G. elasticae* Cooke & Masee, *G. piperatum* Ellis & Everh., *G. psidii* Delacr.) on *Camellia thea* (brown blight of tea) in Burma (Butler & Bisby 1931), Leiktho (Rhind & Seth 1945); *Capsicum annum*, Mandalay (Rhind & Seth 1945); *Ficus elastica*, Maymyo (Rhind & Seth 1945); *Psidium guajava* (post-harvest fruit-rot), Rangoon, 6-vi-1979 (LAM 220487); *Solanum tuberosum*, Mandalay, 15-iii-1972 (IMI 164833); Burma (Sutton 1980). Cf. ***Colletotrichum gloeosporioides*** f.sp. ***camelliae*** Dickens & Cook pathogenic to *Camellia* varieties. Note: *C. coccodes* as described by Sutton (1980) is somewhat noticeably different in conidial morphology from *C. camelliae* as characterized by Saccardo (1902) considering possibility of wide variations. No appressorial comparison can be made between the two based on published data.
  4. ***Colletotrichum coffeanum*** F. Noack (≡ *Gloeosporium coffeanum* Delacr.) on *Coffea arabica*, causing brown blight and bark disease in Burma (Butler & Bisby 1931); Leiktho (Rhind & Seth 1945). Note: ***Glomerella cingulata*** var. ***crassispora*** Wollenw. was reported from the same host sp. in Germany.
  5. ***Colletotrichum corchori*** Pavgi & U.P. Singh on *Corchorus olitorius*, Yezin, 6-ix-1977 (LAM 220542).
  6. ***Colletotrichum crassipes*** (Speg.) Arx (≡ *Colletotrichum Ficus* Koord, *C. orchidearum* Allesch., *Gloeosporium elasticae* Cooke & Masee, *G. orchidearum* Karst. & Har.) on *Croton oblongifolius*, Mandalay, 21-iv-1972 (IMI 170092) with conidial dimensions similar to that of *Gloeosporium crotonis* Delacr.; *Ficus ?carica*, Myitkyina, 19-vi-1980 (LAM 220941b bearing setose acervuli at the base of epiphyllous hairs with oblong, hyaline conidia, 13 x 4.5-5 µm); *Hevea brasiliensis*, Mingaladon, 25-xi-1979 (LAM 220737a); Burma (reported under *Glomerella cingulata* by Butler 1918); *Murraya* sp., Mandalay, 1-x-1972 (IMI 170078); Orchid plant, Mandalay, 4-iv-1971 (IMI 156316); Burma (Sutton 1980).
  7. ***Colletotrichum falcatum*** Went (Anamorphic ***Glomerella tucumanensis*** (Speg.) Arx & E. Müll., ≡ *Colletotrichum graminicola* f.sp. *sacchari* Messiaen, Lafon & Molot) on leaves and culms of *Saccharum*

*officinatum*, Pinyinmana (Rhind & Seth 1945, Thaug 1970b).

8. ***Colletotrichum gloeosporioides*** (Penz.) Penz. & Sacc. (Anamorphic ***Glomerella cingulata*** (Stoneman) Spauld. & Schrenk) on:

1. *Adhatoda* sp., Mandalay, 6-x-1974 (IMI 188945c).
2. *Aleurites montana*, Hsum-Hsai, Shan States, reported as *Gloeosporium aleuriticum* Sacc. (Rhind & Seth 1945). Cf. ***Colletotrichum gloeosporioides*** var. ***aleuritidis*** Saccas & Drouillon pathogenic to *Aleurites fordii* and *A. montana*.
3. *Annona muricata*, Maymyo, 29-vi-1972 (IMI 167200); *A. reticulata*, Mandalay, 21-x-1972 (IMI 170557); *A. squamosa*, Mandalay, 28-i-1972 (IMI 163844).
4. *Araceae* (?*Dieffenbachia* sp.), Rangoon, 25-ix-1979 (LAM 220642).
5. *Arachis hypogea*, Yezin campus, 20-vii-1977 (LAM 220130); on floral stalks, Tatkon, reported as *Gloeosporium* sp. (Rhind & Seth 1945).
6. *Ardisia polycephala*, Botanical Garden, Maymyo, 12-ii-1974 (IMI 183233).
7. *Areca catechu*, Mandalay, 3-iii-1972 (IMI 172439); Mergui, 10-iv-1972 (LAM 220092); Moulmein, 01-v-1972 (IMI 166367); Myitkyina, 19-vi-1980 (LAM 220942d).
8. *Aristolochia indica*, Mandalay, 27-x-1974 (LAM 220858).
9. *Artabotrys* ?*odoratissimus*, Taungmyo, 7-xi-1974 (IMI 190427a).
10. *Artocarpus communis*, Bassein, 21-iv-1974 (IMI 187232), *A. integra*, Madaya, 9-iv-1972 (IMI 169352c); Popa, 15-iv-1972 (IMI 169356).
11. *Asparagus* sp. (Vernacular = *Shint-ma-tek*), North of Kyaukchaw Village, 12-xi-1974 (IMI 190420d - teleomorph).
12. *Azima sarmentosa*, Mandalay, 5-x-1973 (IMI 180202a).
13. *Bauhinia purpurea*, Mandalay, 5-ii-1970 (IMI 146676).
14. *Bignonia magnifica*, Madaya, 10-iv-1971 (IMI 172440a); Toungoo, 7-i-1978 (LAM 220485a).
15. *Bixa orellana* (Vernacular = *Thinbaw Thee-tin*), Sagaing, 29-vi-1972 (IMI 167197b).
16. *Bombax malabaricum*, Mandalay, 29-i-1973 (IMI 172878a).
17. *Bougainvillea spectabilis*, Rangoon, 11-xi-1979 (LAM 220728a). Cf. ***Colletotrichum dematium*** f. ***bougainvilleae*** Arya pathogenic to *Bougainvillea*.
18. *Cacao* sp., Mandalay, 19-v-1973 (IMI 180200).
19. *Cactaceae* (Night-flowering sp.), Aungban, S.S.S., 27-xii-1979 (LAM 220839b).
20. *Caesalpinia pulcherrima*, Rangoon, 3-viii-1972 (IMI 169357).
21. *Calamus* sp., Mandalay, 7-xii-1971 (IMI 164840).
22. *Callistemon lanceolatus*, Mandalay, 27-x-1971 (IMI 161573a).
23. *Calophyllum inophyllum* (Vernacular = *Pon-nyet*), Mandalay, 29-vi-1972 (IMI 167195); *Calophyllum* sp. (Vernacular = *Tharaphe*), Mandalay, 1-x-1972 (IMI 170093).
24. *Calotropis gigantea*, Mandalay, 7-xii-1971 (IMI 163016); 12-x-1979 (LAM 220731a).
25. *Capparis hastigera*, Myitnge, 7-xii-1971 (IMI 163012).
26. *Carica papaya*, Lashio, N.S.S., 1-ii-1975 (IMI 192811c).
27. *Carum copticum*, Windwin, near Meiktila, 25-xi-1971 (IMI 162853).

28. *Casimiroa edulis*, Agricultural Experiment Station, Maymyo, 18-v-1975 (IMI 194481b).
29. *Cassia ?siamea*, Belukyun, 6-i-1978 (LAM 220336).
30. *Cinnamomum inunctum* (Vernacular = *Karaway*), Mandalay, 28-i-1972 (IMI 163857a); *C. obtusifolium*, Mandalay, 10-x-1974 (IMI 188964); School of Indigenous Medicines, Mandalay, 6-x-1974 (LAM 220096).
31. *Citrus* sp., Mandalay, 29-vi-1972 (IMI 167198); Shan States (Rhind & Seth 1945).
32. *Clerodendron macrosiphon*, Mandalay, 22-ix-1973 (IMI 180199a).
33. *Cocos nucifera*, Mandalay, 01-v-1973 (IMI 176158 - teleomorph).
34. *Codiaeum variegatum*, Mandalay, 11-v-1975 (IMI 194464a).
35. *Combretum trifoliatum*, Tadau, 30-iv-1973 (IMI 180760).
36. *Costus speciosus*, Toungoo, 17-iii-1972 (IMI 172437).
37. *Crateva religiosa*, Mandalay, 29-vi-1972 (IMI 167199); Mandalay, 16-i-1974 (IMI 185659).
38. *Crotalaria juncea*, Maymyo, causing grey blight or anthracnose reported as *Colletotrichum curvatum* Briant & E.B. Martyn (Thaung 1970a).
39. *Crinum amabile*, Rangoon, 18-x-1979 (LAM 220603c).
40. *Cucurbita pepo*, Mandalay, 10-x-1970 (IMI 152116b). Cf. physiological taxa ***Colletotrichum gloeosporioides*** f.sp. ***cucurbitae*** Menten, Kimata & C.P. Costa, ***Colletotrichum orbiculare*** (Berk. & Mont.) Arx and ***Glomerella cingulata*** var. ***orbiculare*** S.F. Jenkins & Winstead from cucurbits.
41. *Dalbergia ovata*, Dedaye, 1-v-1972 (IMI 172441).
42. *Dioscorea bulbifera*, University of Rangoon campus, Rangoon, 29-vii-1974 (IMI 187231); *D. sativa*, Rangoon, 28-ix-1979 (LAM 220636a).
43. *Dracaena angustifolia*, Botanical Garden, Maymyo, 28-12-1972 (IMI 188953b); *D. sanderiana*, Rangoon, 27-ix-1979 (LAM 220640a).
44. *Dregea volubilis*, Mandalay, 27-x-1971 (IMI 161590).
45. *Elaeis guineensis*, Gyogon, 20-x-1979 (LAM 220639a).
46. *Eucalyptus* sp., Mandalay, 24-xi-1973 (IMI 180778a).
47. *Eugenia* sp., Mandalay 24-ii-1971 (IMI 172455d).
48. *Eurycles amboinensis*, Rangoon, 29-ix-1979 (LAM 220634a).
49. *Ficus* sp., Mandalay, 12-x-1971 (IMI 161270).
50. *Helicia erratica*./*H. excelsa* Blume, Mandalay, 19-i-1970 (IMI 146047).
51. *Hevea brasiliensis*, Pulaw, Mergui District, 21-viii-1972 (IMI 170556); Mergui, 7-v-1980 (LAM 220925) in greyish leafspots, causing secondary leaf fall of mature rubber (Turner & Myint 1980). Note: same as ***Colletotrichum gloeosporioides*** forma ***heveae*** (Petch) Saccas pathogenic to *Hevea*.
52. *Heynea trijuga*, Maymyo (near B.E. falls), 13-iv-1972 (IMI 172444b).
53. *Hymenocallis littoralis*, Rangoon, 18-x-1979 (LAM 220602c).
54. *Ixora nigricans*, Amarapura, 4-v-1973 (IMI 185684); Maymyo, 11-iii-1975 (LAM 220128); *I. subsessilis* Wall., Mandalay, 16-ii-1974 (IMI 185672b).
55. *Jasminum* sp., Mandalay, 10-iv-1972 (IMI 171320); 12-x-1979 (LAM 220734a); Rangoon, 28-ix-1979 (LAM 220643a).

56. *Jatropha gossypifolia.*, Amarapura, 2-x-1979 (LAM 220735a); Aungban, S.S.S., 27-xii-1979 (LAM 220872a); *J. podagrica*, Rangoon, 20-xi-1979 (LAM 220730a).
57. *Lasia heterophylla*, En route Sinthawt village from Yezin, 17-v-1977 (LAM 220088b - teleomorph).
58. *Liliaceae* (?*Pleomele* sp.), Rangoon, 28-ix-1979 (LAM 220635a).
59. *Limonia acidissima*, Sagaing, 11-x-1973 (IMI 185661).
60. *Mangifera indica.*, Mandalay, 12-x-1971 (IMI 161267c); Rangoon, 18-x-1979 (LAM 220637); throughout Burma (Rhind & Seth 1945).
61. *Mansonia gagei*, Myaung (near Monywa), 4-iv-1972 (IMI 172438).
62. *Mimusops elengi* L. (Vernacular = *Kha-yay pan*), Mandalay, 31-v-1971 (IMI 157830a).
63. *Moraceae* (Vernacular = *Ma-hlaing-bin*), Htonbo en route Maymyo, 16-iv-1974 (IMI 187235).
64. *Morinda angustifolia*, Mandalay, 1-xi-1973 (IMI 181644); Kyonpyaw, 12-iv-1975 (LAM 220129).
65. *Murraya koenigii*, Mandalay, 12-x-1979 (LAM 220736); *Murraya* sp., Myitnge, 27-x-1971 (IMI 161572a); 29-vi-1972 (IMI 167194a).
66. *Nerium odorum*, Mandalay, 20-i-1974 (IMI 182582).
67. *Phrynium* ?*capitatum*, Aungban, S.S.S., 27-xii-1979 (LAM 220857a).
68. *Phyllanthus reticulatus*, Mandalay, 2-x-1979 (LAM 220732).
69. *Piper betle*, as *Gloeosporium* stem rot of betel vine in Madaya, Upper Burma; *P. nigrum*, Near Alantayar Pagoda, Thaton, 29-vi-1972 (IMI 167193b - teleomorph); Tavoy, 15-iv-1974 (IMI 188944); Taikkyi Farm, 25-x-1979 (LAM 220638a).
70. *Pithecolobium dulce*, Hmawbi Farm, 26-x-1979 (LAM 220647).
71. *Plumbago rosea*, Moulmein, 8-xii-1974 (LAM 220097a).
72. *Plumeria acutifolia*, Rangoon, 29-ix-1979 (LAM 220588d).
73. *Prunus armeniaca* (Vernacular = *Met-man-thee bin*), Maymyo, 15-x-1972 (IMI 170558a).
74. *Pterocarpus* sp., Mandalay, 28-i-1972 (MI 163855b); 26-ix-1973 (IMI 180193).
75. *Punica granatum*, Mandalay, 10-xi-1973 (IMI 187218b).
76. *Pyrus malus*, Maymyo?, 19-i-1970 (IMI 146046c).
77. *Quisqualis indica*, Mandalay, 12-iv-1972 (IMI 172442a).
78. *Rauvolfia serpentina*, Taikkyi Farm, 25-x-1979 (LAM 220628c).
79. *Rosa* sp., Mandalay, 22-x-1972 (IMI 171319). Note: not ***Colletotrichum rosarum*** Germano de Sousa or Av.-Saccá.
80. *Saraca indica*, Maymyo, 28-xi-1973 (IMI 185660 with teleomorph + its conidial state).
81. *Sida* sp., Ainthabyu village, Henzada Dist., 2-xi-1979 (LAM 220691b).
82. *Spondias* ?*pinnata*?*dulcis*, Monywa village, Monywa, 2-i-1978 (LAM 220566b - teleomorph).
83. *Sterculia alata*, Mandalay reported as *Gloeosporium* sp. (Rhind & Seth 1945); Cf. ***Sphaceloma sterculiae*** Wani, Thirum. & M.D. Whitehead (Anamorphic ***Elsinöe***) on the same host sp. from India.
84. *Terminalia catappa*, Insein reported as *Gloeosporium terminaliae* Syd. & Butler (Rhind & Seth 1945).
85. *Theobroma cacao*, Taikkyi Farm, 25-x-1979 (LAM 220733a).



86. *Trevesia palmata*, Maymyo, 12-ii-1975(IMI 192812), (LAM 220859).
87. *Trichosanthes palmata*, Rangoon, 20-xi-1979 (LAM 220729a).
88. *Turnera ulmifolia*, Hmawbi Farm, 25-x-1979 (LAM 220646).
89. *Vitis carnosa*, Mandalay, 2-x-1979 (LAM 220748b).
90. *Zephyranthes candida*, Rangoon, 28-ix-1979 (LAM 220644a); *Z. rosea*, Rangoon, 28-ix-1979 (LAM 220645).
91. Unknown plant (Vernacular = *Sansay-ywet*), Mudon, 18-iv-1974 (IMI 185662).
9. ***Colletotrichum gossypii*** Southw. (Anamorphic ***Glomerella gossypii*** Edgerton 1909) on *Gossypium* sp., Mandalay, 3-vi-1973 (IMI 176162); causing anthracnose on bolls of *Gossypium* sp. in Burma (Butler 1918), Amherst (Rhind & Seth 1945).
10. ***Colletotrichum graminicola*** (Ces.) G.W. Wilson (Anamorphic ***Glomerella graminicola*** D.J. Politis, = *Colletotrichum graminicola* f.sp. *zeae* Messiaen, Lafon & Molot) on *Eleusine indica*, Rangoon (near Thwe-se-kangon), 16-xi-1975 (IMI 200322); *Themeda* sp., Htonbo (Rhind & Seth 1945); *Zea mays*, Thazi, 25-vi-1979 (LAM 220543); Burma (Elizabeth & Mordue 1967).
11. ***Colletotrichum lindemuthianum*** (Sacc. & Magnus) Br. & Cav. on *Dolichos lablab*, Thazi, 25-xi-1971 (IMI 162848b); legume (Bean), Mandalay, 2-v-1971 (IMI 160358b - teleomorph); Amarapura (Rhind & Seth 1945), Burma (Sutton 1980). Note: one with relatively long narrow conidia measuring 11-20 x 2.5-5.5 µm in size is assignable as part of ***Colletotrichum gloeosporioides*** complex while the other bearing shorter and relatively broader conidia, 9.5-11.5 x 3.5-4.5 µm, falls into the ***C. orbiculare*** complex in morphological terms (Cannon et al. 2000). ***C. lindemuthianum*** and other members of ***C. orbiculare*** aggregate can be easily, rapidly, and unequivocally identified by the absence of septa in germinating conidia undergoing induced germination on the host surface to produce appressoria (Dron & Bailey 1999).
12. ***Colletotrichum musae*** (Berk. & M.A.Curtis) Arx (= *Gloeosporium musarum* Cooke & Masee) on over-ripe fruits of *Musa sapientum* throughout Burma (Rhind & Seth 1945).
13. ***Colletotrichum nigrum*** Ellis & Halst. on *Capsicum annuum*, causing anthracnose in Burma (Butler 1918) and at Myittha (Rhind & Seth 1945).
14. ***Colletotrichum orbiculare*** (Berk. & Mont.) Arx (= *Colletotrichum lagenaria* (Pass.) Ellis & Halst. as *lagenarium*) on *Cucurbita pepo*, Mandalay, 12-x-1971 (IMI 161271a); *Lagenaria vulgaris*, Insein, 29-ix-1979 (LAM 220593e); Burma (Sutton 1980). Note: it is a collective sp. embracing several form spp. of which ***C. lindemuthianum*** is one host-specific to *Phaseolus vulgaris* (bean) and *P. coccineus* (scarlet runner) in Latin America and Africa (Dron & Bailey 1999).
15. ***Colletotrichum piperis*** Petch on leaf and stem of *Piper betle*, Mandalay (New Civil Lines), 5-ix-1974 (IMI 188946), (IMI 188947). Note: ***C. crassipes*** was also reported on or from this host plant genus (Sutton 1980).
16. ***Colletotrichum sublineolum*** Henn. 1905 (= *Colletotrichum graminicola* (Ces.) Wils. f. sp. *sorghii* Messiaen, Lafon & Malot) on *Sorghum vulgare* (= *Andropogon sorghum*) (Butler & Bisby 1931); Ta-da-u, 17-xii-1977 (LAM 220439b); *Sorghum* sp., Taungtha, 20-xii-1977 (LAM 220329c), throughout Burma (Rhind & Seth 1945, Sutton 1980).
12. 1. ***Coniella fragariae*** (Oud.) B. Sutton on unknown host plant (Vernacular = *Hna-khaung-phyu-ywet-bin*), Myaungmya, 13-xi-1979 (LAM 220767). Note: pycnidium immersed; conidia medium brown, subglobose with subtruncate base and prominently but slightly apiculate apex, 8.5 x 5.5 – 6.5 µm.

2. **Coniella granati** (Sacc.) Petr. & Syd. on *Anogeissus acuminata*, Botanical Garden, Maymyo, 12-xi-1974 (IMI 183240).
  3. **Coniella minima** B. Sutton & Thaug in yellowish lesions on *Eucalyptus camaldulensis*, Nandayan Plantation, Katha, 15-ix-1973 (IMI 179300, holotype).
  4. **Coniella petrakii** B. Sutton on *Eucalyptus camaldulensis*, Nandayan Plantation, Katha, 15-ix-1973 (IMI 179301).
- 13.**
1. **Coniothyrium concentricum** (Desm.) Sacc. ( $\equiv$  *Microsphaeropsis concentrica* (Desm.) Morgan-Jones) on *Livistona speciosa*, Pyinmana, 12-xii-1973 (IMI 181646b).
  2. **Coniothyrium fuckelii** Sacc. (Anamorphic **Leptosphaeria coniothyrium** (Fuckel) Sacc.,  $\equiv$  *Microsphaeropsis fuckelii* (Sacc.) Boerema,) on:
    1. *Artabotrys burmanicus*, Rangoon, 21-iii-1974 (IMI 191521); Maymyo, 9-ii-1974 (IMI 191523).
    2. *Artabotrys odoratissimus*, Rangoon, 28-ix-1979 (LAM 220662).
    3. Bamboo, Rangoon, 10-viii-1972 (IMI 169360b).
    4. *Cinnamomum camphora*, Maymyo, 5-iv-1974 (IMI 187222). Note: pycnidia immersed, ostiolate; conidia small, brown, subglobose to globose, about 3.5  $\mu$ m in diam.
    5. *Clytostoma binatum*, Mandalay, 10-iii-1972 (IMI 164832).
    6. *Cocos nucifera*, Mandalay, 1-vi-1973 (IMI 177243a).
    7. *Ebenaceae* (Vernacular = *Kadipathee*, 'velvet apple'), Mandalay, 13-x-1971 (IMI 164828a).
    8. *Jasminum* sp., Mandalay, 1-iii-1972 (IMI 171312).
  9. *Livistona speciosa*, Pyinmana, 12-xii-1973 (IMI 181646a).
  10. *Magnoliaceae* (Vernacular = *Tadaing-hmwe-gale*), Rangoon, 10-xi-1972 (IMI 171308a).
  11. *Mesua ferrea*, Mandalay, 28-i-1972 (IMI 163843b).
  12. *Murraya* sp., Sagaing, 20-xi-1973 (IMI 180777c).
  13. *Roystonea elata*, Rangoon, 25-xi-1979 (LAM 220763c).
  14. *Sideroxylon tomentosum*, Mandalay, 12-xii-1972 (IMI 180192a), and in Burma (Punithalingam 1980a).
- 14.**
1. **Cryptocline** sp. on ?*Salix* sp., Maymyo, 12-ii-1975 (LAM 2200030) and (IMI 192810).
- 15.**
1. **Cylindrosporium sesami** Hansf. ( $\equiv$  *Pseudocercospora sesami* (Hansf.) Deighton) on *Sesamum indicum*, Myaungmya, 10-vii-1971 (IMI 169349); Yezin campus, Pyinmana, 11-xii-1973 (IMI 181627); 20-vii-1977 (LAM 220131); Myitkyina, 19-vi-1980 (LAM 220937).
- 16.**
1. **Cytoplea orientalis** B. Sutton on *Phragmites karka*, Rangoon, 29-ii-1972 (IMI 164838); Burma (Sutton 1980).
- 17.**
1. **Cytospora eucalypticola** van der Westh. on *Eucalyptus* sp., GTI compound, Mandalay, 18-x-1973 (IMI 180195).
  2. **Cytospora** spp. on: *Caryota urens*, Mandalay, 27-x-1972 (IMI 170574); *Eugenia* sp., Myitkyina, 6-viii-1972 (IMI 171311); *Calophyllum inophyllum* L., Mandalay, 20-x-1973 (IMI 180195); *Nephelium lit-chi*, Burma, 21-iv-1974 (IMI 187220b). Cf. **Cytospora chrysosperma** (Pers.) Fr. and **C. litchi** Sharma.
- 18.**
1. **Diplodia corchori** (Desm.) J. Kickx f. on *Corchorus olitorius*, causing black band disease in Irrawaddy delta (Thaug 1970a).

2. **Diplodia oryzae** I. Miyake on *Oryza sativa*, Mandalay, causing grain discoloration (Thaung 1970a).
3. **Diplodia natalensis** Pole-Evens on fruits of *Citrus medica* and *C. nobilis* in Shan States; *Garcinia mangostana* in Mudon, causing fruit-rot and dieback and death of twigs and shedding of immature fruits (Gregson 1936); *Mangifera indica*, causing fruit stem-end rot throughout Burma (Rhind & Seth 1945).
4. **Diplodia** spp. on: *Acacia pennata* (on stem), Tutkon, 1-vii-1977 (LAM 220136); *Calophyllum inophyllum*, Kyaukse, 5-xii-1977 (LAM 220430b); *Imperata cylindrica*, Rangoon, 18-vii-1979 (LAM 220559f); *Mangifera indica*, Mandalay, 12-x-1971 (IMI 161267b); ?*Saccharum spontaneum* L., Roadside between Nyaunglebin and Penwagon, 21-iv-1972 (IMI 166349a). Cf. **D. acaciae** Penz. & Sacc. and **D. saccharicola** Pavgi & U.P. Singh.
19. 1. **Diplozythiella bambusina** Died. on leaves of *Bambusa* sp., Madaya (Rhind & Seth 1945).
20. 1. **Discosia artocreas** (Tode ex Fr.) Fr. on *Polyalthia longifolia*, Mandalay, 01-ii-1973 (IMI 180769b).
21. 1. **Discosporium eugeniae** (Allesch.) B. Sutton ( $\equiv$  *Gloeosporium eugeniae* Allesch.) on *Eugenia* sp., Mandalay campus, 9-iii-1973 (IMI 173554). Cf. **Gloeosporium eugeniae** Chona & Munjal.
22. 1. **Discula** sp. on *Gardenia coronaria*, Botanical Garden, Maymyo, 12-ii-1974 (IMI 183238).
23. 1. **Erythrogloeum** sp. on *Lagerstroemia villosa*, Botanical Garden, Maymyo, 12-ii-1974 (IMI 183248).
24. 1. **Fusamen** sp. on *Quercus* sp., Botanical Garden, Maymyo, 23-viii-1973 (IMI 185663), (LAM 2200031).
25. 1. **Fusicoccum** spp. (Anamorphic **Botryosphaeria ribis** Grossenb. & Duggar) on *Eugenia* sp., Myittha, 26-iv-1972 (IMI 172453); *Mesua ferrera*, Wintho, 10-xii-1972 (IMI 180191b).
26. 1. **Harknessia** sp. close to **H. globosa** B. Sutton on *Prunus communis*, Aungban, S.S.S., 10-vii-1977 (LAM 220141b).
27. 1. **Idiocercus** sp. on *Schima wallichii*, Botanical Garden, Maymyo, 19-v-1974 (IMI 185664), (LAM 220032).
28. 1. **Jubispora acaciae** B. Sutton & H.J. Swart ( $\equiv$  *Septogloeum acaciae* Verwoerd & du Plessis) on *Acacia arabica*, Mandalay, 10-iii-1972 (IMI 164830).
29. 1. **Lasiodiplodia theobromae** (Pat.) Griffon & Maubl. ( $\equiv$  *Botryodiplodia theobromae*) on:
1. *Areca catechu*, Thayagon monastery, Thayagon, near Yezin Village, 15-ix-1977 (LAM 220206a).
  2. *Artabotrys burmanicus*, Mandalay, 14-xii-1973 (IMI 191522c).
  3. *Caryota urens*, Bassein, 7-iv-1974 (IMI 187216).
  4. *Ceiba pentandra* (on terminal twigs), Kyaukse (Rhind & Seth 1945).
  5. *Cinchona* sp., Lower Burma (Butler & Bisby 1931).
  6. ?*Clerodendron* sp. (Vernacular = *Phet-kha*), Madaya, 3-xi-1972 (IMI 171310). Note: pycnidia immersed, 164-168  $\mu$ m in diam., with wall 14-16  $\mu$ m thick; conidia thick-walled, hyaline, ovoid to ellipsoid, 10-16 x 12-19  $\mu$ m.
  7. *Hevea brasiliensis* (on stems), Mergui (Rhind & Seth 1945).
  8. *Magnolia* sp. (Vernacular = (*Ta-yôk*) *Ta-taing-hmwe-ga-lay*), Rangoon, 10-xi-1972 (IMI 171308b).
  9. *Manihot glaziovii* (on roots), Myaungmya (Rhind & Seth 1945).
  10. *Mimusops elengi*, Mandalay, 01-v-1973 (IMI 175751). Note: pycnidia immersed, 160-200 x 140-160  $\mu$ m; conidia hyaline, ovoid to broadly oblong,  $\pm$  2-guttulate, 20-28 x 10-16  $\mu$ m.

11. *Murraya* sp., Yawnshwe, S.S.S., 30-iv-1973 (IMI 176157a).
12. *Nerium odorum*, Pyinmana, 16-ix-1977 (LAM 220283).
13. *Pterocarpus* sp., Taungmyo near Mandalay, 20-x-1972 (IMI 170573).
14. *Rosa* sp. (on stem), Popa, 15-ix-1972 (IMI 170077).
15. *Saccharum officinarum*, causing dry rot of culms, Pyinmana (Butler 1918, Rhind & Seth 1945).
16. *Theobroma cacao* (on fruits), Taikkyi Farm, 25-x-1979 (LAM 220757).
- 30.** 1. ***Lasmeniella congoensis*** (Har. & Pat.) Petr. & Syd. on *Caesalpinaceae* or *Papilionaceae*, Rangoon, 28-xi-1975 (IMI 199737b).
- 31.** 1. ***Leptodothiorella*** spp. on *Eurycles amboinensis*, Rangoon, 29-ix-1979 (LAM 220634c); *Garcinia cowa*, Botanical Garden, Maymyo, 12-ii-1974 (IMI 183249); unknown host (Vernacular = *Na-hee* in Chin dialect), Tiddim, Chin Hills, 10-iv-1974 (IMI 187214).
- 32.** 1. ***Macrophoma camarana*** Traverso & Spessa on stem of *Rosa* sp., Mandalay, 28-x-1972 (IMI 171307), causing dieback. Note: this fungus needs to be formally referred to the conserved name ***Sphaeropsis*** Sacc. of which *Macrophoma* is considered as a later synonym (Sutton 1980).
- 33.** 1. ***Macrophomina phaseolina*** (Tassi) Goid ( $\equiv$  *Macrophoma phaseoli* Maubl., *Sclerotium bataticola* Taubenh) on: *Cajanus cajan*, *Dipterocarpus obtusifolius*, Yezin campus, 11-vi-1977 (LAM 220161); *Dipterocarpus* sp., Salin, 12-x-1971 (IMI 161268); *Durio zibethinus*, Moulmein, 21-xii-1973 (IMI 188941); *Nerium odorum*, Mandalay, 7-i-1974 (IMI 187212); *Arachis hypogaea* (on roots), Myingyan; *Areca catechu* (on roots and shoots), Madaya; *Sesamum orientale* (on collars, roots and stems), throughout Burma (Rhind & Seth 1945). Note: ***Phoma gentianae-sino-ornatae*** Punith. & R. Harling is a similar fungus (Boerema *et al.* 2004).
- 34.** 1. ***Macrophomopsis*** sp. (Anamorphic ***Botryosphaeria ribis*** Grossenb. & Duggar) reported as *Dothiorella ribis* (Fuckel) Sacc. on fruits of *Mangifera indica*, causing stem-end rot throughout Burma (Rhind & Seth 1945).
2. ***Macrophomopsis*** sp. ( $\equiv$  *Dothiorella tamarindi* V.K. Jadhav apud R.S. Mathur) on *Tamarindus indica*, Rangoon, 11-xi-1979 (LAM 220727g) with dark, globose pycnidia in lesions bearing subclavate to oblong, hyaline, aseptate, guttulate, smooth, 16.5 – 18.5 x 3.5 – 4.0  $\mu$ m, conidia filling up the pycnidium.
3. ***Macrophomopsis*** sp. on and from *Borassus flabellifer*, Mandalay, 31-v-1971 (IMI 157829 b).
4. ***Macrophomopsis*** sp. on *Bulbophyllum auricomum* ( $\equiv$  *Dendrobium tripetaloides*), Rangoon, 19-ix-1974 (IMI 188938). Note: conidia hyaline, fusoid, aseptate, 11-16.6 x 3.7  $\mu$ m, borne on distinct conidiophores measuring 7.4-14.8 (11) x 1.23-2.76  $\mu$ m.
- 35.** 1. ***Marssonina psidii*** B. Sutton *Psidium guajava*, Mandalay, 30-iii-1972 (IMI 169371).
2. ***Marssonina rosae*** (Lib.) Died. ( $\equiv$  *Actinonema rosae* (Lib.) Fr.) on *Rosa* sp., Mandalay, 13-xii-1977 (LAM 220431); Maymyo (Rhind & Seth 1945); Pegu, 28-xii-1977 (LAM 220335). Note: subiculum fibrillose; conidia ellipsoid to subballantoid, 1-septate, without curved beak at the apex.
3. ***Marssonina*** sp. on ?*Cedrela serrata* (Vernacular = *Taung-tama*), Maymyo, 19-ii-1972 (IMI 180770).
- 36.** 1. ***Microdiplodia cycadella*** Gonz. Frag. on *Cycas* sp., Mandalay, 2-x-1972 (IMI 177240).
2. ***Microdiplodia litchii*** V. N. Pathak & B.G. Desai on *Nephelium lit-chi* ( $\equiv$  *Litchi chinensis*), Burma, 21-iv-1974 (IMI 187220a).
3. ***Microdiplodia maculata*** (I. Miyake & Hara) Sacc. on *Bambusa siamensis*, Htonbo on the way to Maymyo, 20-i-1972 (IMI 175729a).

4. ***Microdiplodia perpusilla*** (Desm.) Allesch. on *Polyalthia longifolia*, Mandalay, 01-ii-1973 (IMI 180769a).
5. ***Microdiplodia*** spp. on: *Borassus flabellifer*, Salin, 14-xi-1972 (IMI 187213a); *Calophyllum inophyllum*, Kyaukse, 5-xii-1977 (LAM 220430a); *Cinnamomum camphora*, Myay-Pade-Tha Kyun, Rangoon, 26-iv-1975 (IMI 194482a); *Mesua ferrea* L., Mandalay, 28-i-1972 (IMI 163843a).
37. 1. ***Microsphaeropsis glumarum*** (Ellis & Tracy) Boerema (≡ *Phoma glumarum* Ellis & Tracy) on glumes of *Oryza sativa*. throughout Burma (Rhind & Seth 1945); Yezin campus, 10-viii-1977 (LAM 220190).
2. ***Microsphaeropsis*** sp. on *Clerodendron macrosiphon*, Campus Botanical Garden, Mandalay, 22-ix-1973 (IMI 180202b).  
Note: young pycnidia of *Microsphaeropsis* sp. with immature, still colourless conidia, may be easily mistaken for a *Phoma* sp. (Boerema et al. 2004).
38. 1. ***Monochaetina terminaliae*** (Bat. & J.L. Bezerra) Muthumary, Abbas & B. Sutton as *terminaliae* on *Terminalia catappa*, Mandalay, 12-x-1972 (IMI 170563); *Hiptage benghalensis*, en route Poh-to-pin from Yezin, 23-v-1977 (LAM 220099).
39. 1. ***Natrassia mangiferae*** (Syd. & P. Syd.) B. Sutton & Dyko (≡ *Hendersonula toruloidea* Natrass) on *Plumeria obtusa*, Mandalay, 9-x-1972 (IMI 170555).
40. 1. ***Parahyalotiopsis borassi*** (Thaung) Nag Raj (≡ *Hyalotiopsis borassi* Thaung) on leaves of *Borassus flabellifer*, Mandalay, 20-x-1973 (IMI 180210).
41. 1. ***Pestalotia lepidospermatis*** Henn. on *Fuirena* sp. (on leaves, leafsheaths, and culms), Maymyo, collector Inayat Khan, 19-i-1908 (Mundkur & Kheswalla 1942).
2. ***Pestalotia malorum*** Elenkin & Ohl on leaves of *Pyrus malus*, Maymyo, collector E.J. Butler, 18-i-1908 (Mundkur & Kheswalla 1942, Rhind & Seth 1945).
3. ***Pestalotia piperis*** Petch on *Piper nigrum*, Alantayar Pagoda, Thaton, 29-vi-1972 (IMI 167193a).
4. ***Pestalotia*** sp. on leaves of *Aleurites montana*, Hsum-Hsai, Shan States (Rhind & Seth 1945).
42. 1. ***Pestalotiopsis adusta*** (Ell. & Everh.) Steyaert on *Citrus medica* var. *acida*, Myitnge, 27-x-1971 (IMI 161587).
2. ***Pestalotiopsis disseminata*** (Thüm) Steyaert 1949 on *Ixora coccinea*, Mandalay, 20-xi-1973 (IMI 180763); *Pithecolobium bigeminum*, loc. indet., 31-v-1971 (IMI 157838a); *Sideroxylon tomentosum*, Mandalay, 12-xii-1972 (IMI 180192b); 18-xi-1973 (IMI 180761).
3. ***Pestalotiopsis glandicola*** (Castagne) Steyaert on *Quercus serrata*, Botanical Garden, Maymyo, 12-ii-1974 (IMI 183236).
4. ***Pestalotiopsis hughesii*** Steyaert on ?*Cyperus* sp. (Vernacular = *Nwa-myeet* = oxtail grass), Pulaw, near Mergui, 6-viii-1972 (IMI 171317).
5. ***Pestalotiopsis japonica*** (Syd.) Steyaert 1949 on *Berberis nepalensis*, Botanical Garden, Maymyo, 12-ii-1974 (IMI 183237); *Croton ?oblongifolius*, Maymyo, 16-ii-1975 (IMI 194483); *Mimusops elengi* (Vernacular = *Kha-yay pan*), Mandalay, 31-v-1971 (IMI 157830b), 10-x-1974 (LAM 220054). Cf. ***Pestalotia caffra*** Syd. & P. Syd. on the same host sp. in India (Mathur 1979).
6. ***Pestalotiopsis longiaristata*** (Maubl.) Kausar (≡ *Pestalotia longiaristata* Maubl.) on leaves of *Eriobotrya japonica*, Maymyo (Rhind & Seth 1945).
7. ***Pestalotiopsis mangiferae*** (Henn.) Steyaert (≡ *Pestalotia mangiferae* Henn.) on leaves of *Eucalyptus tereticornis* and *E. aligna*, Nandanay Plantation, Katha, 15-ix-1973 (IMI 179229 + IMI 179303); *Mangifera indica*, Mandalay (Rhind & Seth 1945); *Vitis vinefera* L., Se-bauk, near Popa, Kyaukpandaung, 20-xi-1973 (IMI 180780); Burma (Mordue 1980).

8. ***Pestalotiopsis microspora*** (Speg.) G.C. Zhao & N. Li (≡ *Pestalotiopsis dichchaeta* (Speg.) Steyaert) on *Araucaria* sp., Popa, 16-ix-1972 (IMI 170094).
9. ***Pestalotiopsis neglecta*** (Thüm) Steyaert on *Hibiscus sabdariffa*, Shwenattaung (near Prome), 9-xi-1973 (IMI 180762).
10. ***Pestalotiopsis palmarum*** (Cooke) Steyaert (≡ *Pestalotia palmarum* Cooke) on *Areca catechu*, Madaya (Rhind & Seth 1945); Myitkyina, 19-vi-1980 (LAM 220942c); Popa, 26-ii-1972 (IMI 162847); Thayagon monastery, Thayagon village, near Yezin, 15-ix-1977 (LAM 220206b); *Arenga saccharifera* or *Livistona* sp., Pyinmana, 19-xii-1977 (LAM 220539); *Borassus flabellifer*, Kyaukse (Rhind & Seth 1945); Rangoon, 3-ii-1978 (LAM 220338b); *Calamus arborescens*, Pyinmana, 1-i-1973 (IMI 172877a); *Cocos nucifera*, Amarapura, 20-v-1973 (IMI 177242a); Bassein, 1-xii-1977 (LAM 220506); Madaya (Rhind & Seth 1945); Mandalay, 1-vi-1973 (IMI 177243b); Mergui, 2-xi-1971 (IMI 164826); Rangoon, 04-iv-1973 (IMI 175720b); Tadau, near Myitnge, 1-xi-1972 (IMI 171318a); *Cyperus alternifolius*, Rangoon, 5-xii-1979 (LAM 220874); *Elaeis guineensis*, Gyogon, 20-x-1979 (LAM 220639c); *Eugenia* sp., Mandalay, 10-iii-1972 (IMI 169350); *Licuala ?peltata*, Rangoon, 6-x-1979 (LAM 220666c); *Phoenix paludosa*, Kyaukpandaung, 25-xii-1977 (LAM 220505a); Mount Popa, 17-ix-1972 (IMI 170073b); *Ravenala madagascariensis*, Rangoon General Hospital Yard, 15-viii-1972 (IMI 169355a); *Roystonea elata*, Rangoon, 25-xi-1979 (LAM 220763a).
11. ***Pestalotiopsis phoenicis*** (Vize) Y.X. Chen (≡ *Pestalotia phoenicis* Vize & Cooke) on *Cocos nucifera*, Mergui, 12-x-1971 (IMI 161282).
12. ***Pestalotiopsis psidii*** (Pat.) Mordue (≡ *Pestalotia psidii* Pat.) on fruits of *Psidium guajava*, Mandalay, collected by F.J.F. Shaw, ?-vii-1915 (Mundkur & Kheswalla 1942, Rhind & Seth 1945); Mandalay, 25-xi-1971 (IMI 162850); Burma (Mordue 1976).
13. ***Pestalotiopsis theae*** (Sawada) Steyaert on leaves of *Calamus arborescens*, Pyinmana, 1-i-1973 (IMI 172877b); *Camellia sinensis* (≡ *Camellia thea*), Leiktho (Rhind & Seth 1945); *Eucalyptus saligna*, Nandayan Plantation, Katha, 15-ix-1973 (IMI 179304); Burma (Mordue & Holliday 1971).
14. ***Pestalotiopsis versicolor*** (Speg.) Steyaert on *Achras sapota*, Mandalay, 11-i-1974 (IMI 185658); *Bouea burmanica*, Kyaukse, N.S.S., 21-iii-1972 (IMI 166357); *Calamus arborescens*, Pyinmana, 1-i-1973 (IMI 172877c); *Eugenia* sp., Mandalay 24-ii-1971 (IMI 172455a).
15. ***Pestalotiopsis*** sp. on *Acacia concinna*, Rangoon, 7-xi-1979 (LAM 220685b). Cf. ***Pestalotiopsis acaciae*** (Thüm.) K. Yokoy. & S. Kaneko.
16. ***Pestalotiopsis*** sp. on *Antigonon leptopus*, Rangoon, 18-x-1979 (LAM 220660).
17. ***Pestalotiopsis*** sp. on *Artocarpus integra*, Zingyeik and Alantayar Hills, Thaton, 29-iv-1972 (IMI 169353) and (IMI 169354).
18. ***Pestalotiopsis*** sp. on *Bignonia magnifica*, Tutkon, 29-xii-1977 (LAM 220486a).
19. ***Pestalotiopsis*** sp. on *Callistemon lanceolatus*, Mandalay, 27-x-1971 (IMI 161573b).
20. ***Pestalotiopsis*** sp. on *Calophyllum inophyllum*, Mandalay, 29-vi-1972 (IMI 167195 = IMI 161574d). Cf. ***Pestalotiopsis calophylli*** (Henn.) Y.X. Chen and ***P. calabae*** (West.) Steyaert on *Calophyllum* spp.
21. ***Pestalotiopsis*** sp. on *Cinnamomum* sp., Pyinmana, 16-vii-1977 (LAM 220541a).
22. ***Pestalotiopsis*** sp. on *Clerodendron serratum*, Hmawbi Farm, 26-x-1979 (LAM 220652b).
23. ***Pestalotiopsis*** sp. on *Grewia* sp., Yezin, 30-ix-1977 (LAM 220540).

24. ***Pestalotiopsis*** sp. on *Hevea brasiliensis*, Tavoy, 25-iv-1973 (IMI 175739b). Cf. ***Pestalotiopsis guepini*** (Desm.) Steyaert.
25. ***Pestalotiopsis*** sp. on *Heynea trijuga*, Maymyo (near B.E. falls), 13-iv-1972 (IMI 172444a).
26. ***Pestalotiopsis*** sp. on *Lagerstroemia speciosa*, Rangoon, 15-x-1979 (LAM 220607b). Cf. ***Pestalotiopsis guepini*** (Desm.) Steyaert.
27. ***Pestalotiopsis*** sp. on *Livistona speciosa*, Pyinmana, 12-xii-1973 (IMI 181646d). Cf. ***Pestalotiopsis palmarum*** (Cooke) Steyaert.
28. ***Pestalotiopsis*** sp. on *Magnoliaceae* (Vernacular = *Tadainghmwe-gale*), Rangoon, 10-xi-1972 (IMI 171316). Note: it exhibits considerable variations in size and appendage length for applying specific epithet. Cf. ***Pestalotiopsis magnoliae*** J.M. Yen 1980, ***P. mangifolia*** (Guba) J. Xiang Zhang & T. Xu.
29. ***Pestalotiopsis*** sp. on *Melaleuca leucadendron*, Botanical Garden, Maymyo, 12-ii-1974 (IMI 183222).
30. ***Pestalotiopsis*** sp. on *Murraya* sp., Myitnge, 27-x-1971 (IMI 161572 b); 29-vi-1972 (IMI 167194b).
31. ***Pestalotiopsis*** sp. on *Ochna* sp. probably *pumila*, Rangoon, 4-xii-1974 (IMI 190926b).
32. ***Pestalotiopsis*** sp. on *Pithecolobium bigeminum*, Myitkyina, 30-xii-1977 (LAM 220945).
33. ***Pestalotiopsis*** sp. on *Plumbago rosea*, Taikkyi Farm, 25-x-1979 (LAM 220762).
34. ***Pestalotiopsis*** sp. on *Rosa* sp., Pyinmana, 17-xii-1970 (IMI 153661b). Cf. ***Pestalotiopsis rosae*** (Westend.) X.A. Sun & Q.X. Ge.
35. ***Pestalotiopsis*** sp. on *Tamarindus indica*, Rangoon, 11-xi-1979 (LAM 220727h).
36. ***Pestalotiopsis*** sp. on *Theobroma cacao*, Taikkyi Farm, 25-x-1979 (LAM 220733c).
37. ***Pestalotiopsis*** sp. on *Zea mays*, Myitkyina, 18-vi-1980 (LAM 220936d).
38. ***Pestalotiopsis*** sp. on Unknown host, Alantayar Pagoda, near Thaton, 15-v-1971 (IMI 157609).
43. 1. ***Pestalozzina*** sp. on *Garcinia mongostana*, causing greyish leafspot, Burma (Gregson 1936).
44. 1. ***Phaeocystostroma sacchari*** var. ***sacchari*** (Ell. & Ev.) B. Sutton (= *Melanconium sacchari* Masee) on culms and midribs of leaves of *Saccharum officinarum*, Bilin (Rhind & Seth 1945); Myitkyina, 18-vi-1980 (LAM 220939); *S. spontaneum* L., Myaungmya, 13-xii-1979 (LAM 220768); Burma (Sutton & Waterston 1966).
45. 1. ***Phaeoseptoria eucalypti*** Hansf. on *Eucalyptus* sp., Maymyo, 20-i-1974 (IMI 185241), (LAM 220252).
2. ***Phaeoseptoria*** sp. on *Pyrus malus.*, Maymyo, 28-xii-1972 (IMI 176164c). Cf. ***P. pyri*** R.K. Verma on leaves of *Pyrus pashia* from India in Uttar Pradesh.
46. 1. ***Phloeospora*** spp. on *Bischofia javanica*, Botanical Garden, Maymyo, 12-ii-1974 (IMI 183218), 17-xii-1977 (LAM 220337); ?*Ipomoea* sp. (Vernacular = *taw-zabyit-new-yaing*), 60A Golden Valley, Rangoon, 21-viii-1973 (IMI 179307); Rangoon, 5-ix-1973 (LAM 220058); *Ipomoea vitifolia*, Rangoon, 18-x-1979 (LAM 220661); Unknown (Vernacular = *Fah* in Chin dialect), Haka, Chin Hills, 10-iv-1974 (IMI 187238).
47. 1. ***Phoma anethi*** (Pers. ex Fr.) Sacc. on *Anethum graveolens*, Mandalay, 27-iii-1969 (IMI 139147).
2. ***Phoma annullata*** Pons (Anamorphic ***Leptosphaeria sacchari*** Breda de Haan (= *Phaeosphaeria sacchari* (Breda de Haan) Shoemaker & C.E.Babc.), = *Phyllosticta saccharicola* Henn., *Phoma saccharina* Syd. & P. Syd.), causing ring spot on *Saccharum officinarum.*, Belin

- and Pynmana (Butler 1918, Rhind & Seth 1945).
3. ***Phoma asparagina*** Tehon & G. L. Stout on *Asparagus* sp. (Vernacular = *Shint-ma-tek*), North of Kyaukchaw Village, 12-xi-1974 (IMI 190420c).
  4. ***Phoma cinnamomi*** Sacc. on *Cinnamomum inunctum*, Agricultural Experiment Station, Maymyo, 18-v-1975 (IMI 194485).
  5. ***Phoma exigua*** var. ***exigua*** [as 'Var.a'] (≡ *Ascochyta phaseolorum* Sacc.) on legume (Bean) plant, Shan Sate, 23-iii-1971 (IMI 155992); *Vigna catjang* Walp. var. *sinensis*, Shangalekyun (near Amarapura), 19-i-1973 (IMI 172863).
  6. ***Phoma fimeti*** Brunaud on *Bouea burmanica*, Einmê, 1-v-1972 (IMI 166356); Burma (Sutton 1980).
  7. ***Phoma glomerata*** (Corda) Wollenw. & Hochapfel (≡ *Phoma olivarum* Thüm) on *Murraya* sp., Yawnshwe, S.S.S., 30-iv-1973 (IMI 176157b); *Pyrus malus*, Maymyo, 28-xii-1972 (IMI 176164a); *Olea europaea*, Maymyo, 23-iii-1974 (IMI 185230) with intraepidermal, globose pycnidia and; hyaline, oblongo-fusoid conidia; Burma (Sutton 1980). Note: it was reported as a mycoparasite of powdery mildews in the United States and Russia (Sullivan & White Jr. 2000).
  8. ***Phoma leveillei*** var. ***leveillei*** Boerema & J.G. Bollen (≡ *Pyrenochaeta oryzae* Shirai ex I. Miyake) causing sheath blotch on leaves and sheaths of *Oryza sativa* throughout Burma (Rhind & Seth 1945).
  9. ***Phoma nebulosa*** (Pers. ex Fr.) Berk. on *Impatiens balsamina*, Thazi, 25-xi-1973 (IMI 180784b); Burma (Kinsey 2002a).
  10. ***Phoma papayae*** Sohi, S.L. Sharma, S.K. Nayar & Shayam on *Carica papaya*, Lashio, N.S.S., 1-ii-1975 (IMI 192811a). Cf. ***Phoma caricae-papayae*** (Tarr) Punith.
  11. ***Phoma putaminum*** Speg. 1881 on unknown host (Vernacular = *Kawp Thep* in Chin dialect), Haka, Chin Hills, 10-iv-1974 (IMI 187215); Burma (Kinsey 2002b, Sutton 1980). Note: pycnidia thin-walled, yellowish brown, ostiolate, ovoid to subglobose, superficial; conidia small, oblongish to ovoidish, hyaline, 3.7 – 4.6 x 1.8 – 2.7 µm). The sp. is characterized by the greenish guttules in the conidia (a stable character) per Boerema & Dorenbosch (1973).
  12. ***Phoma sorghina*** (Sacc.) Boerema, Dorenb. & Kesteren (≡ *Phoma insidiosa* Tassi, *Phoma saccharina* Syd. & P. Syd.) on *Coix* sp., Mandalay, 10-iii-1973 (IMI 172443); mid-ribs of *Saccharum officinarum*, Mandalay (Rhind & Seth 1945); Kyaungkon, 6-xii-1977 (LAM 220334a); Burma (Punithalingam 1985a).
  13. ***Phoma*** sp. on *Allium cepa*, Mandalay, 12-x-1979 (LAM 220741b). Cf. ***Phoma exigua*** var. ***exigua*** and ***P. glomerata*** since both have been reported to be isolated from this host genus (Boerema & Dorenbosch. 1973).
  14. ***Phoma*** sp. on *Alpinia conchigera*, Myitkyina, 17-vi-1980 (LAM 220930d). Note: pycnidia brown, thin-walled, ostiolate; conidia in tendrils, pale olivaceous, aseptate, subglobose to oblong with rounded ends, 3.5-4 x 1.5-2 µm.
  15. ***Phoma*** sp. on *Amaranthus* sp., Myitkyina, 18-vi-1980 (LAM 220935). Note: conidia in tendrils, hyaline, aseptate, ovoid to broadly ellipsoid, 5.5 x 3.0 µm. Cf. ***Phoma amaranthi*** Brunaud, ***P. amaranthi*** Halst., ***P. amaranthicola*** Brunaud.
  16. ***Phoma*** sp. on *Arachis hypogaea*, Yezin Farm, 20-vii-1977 (LAM 220135). Cf. ***Phoma arachidicola*** Marasas, Pauer & Boerema from South Africa and ***P. arachidis-hypogaeae*** (V.G. Rao) Aa & Boerema from India, both on the same host sp.
  17. ***Phoma*** sp. on *Areca catechu*, Myitkyina, 19-vi-1980 (LAM 220942e). Note: conidia subhyaline to hyaline, oblongo-ellipsoid to subclavate, biguttulate with greenish guttules at extreme ends, 7.5 x 2.5-3.0 µm.



18. **Phoma** sp. on *Artocarpus ?rigidus*, Mudon, 10-xii-1977 (LAM 220333).
19. **Phoma** sp. on *Arundina bambusaefolia*, Rangoon, 1-xi-1979 (LAM 220754). Note: pycnidia erumpent; conidia hyaline, aseptate, guttulate, mostly oblong with rounded ends, 5.5 x 2 – 2.5  $\mu\text{m}$ . Six spp. of **Phoma** have so far been reported on *Arundina* including **P. arundinacea** f. **bambusina** Sacc.
20. **Phoma** sp. on *Averrhoa carambola*, Amherst, 10-iii-1975 (LAM 220162). Cf. **Phoma averrhoae** Subramon. & V.G. Rao (as *averrhoiae*) on fruits of the same host sp. in India.
21. **Phoma** sp. on *Azima ?tetracantha*, Thazi, 26-xii-1979 (LAM 220834c). Note: pycnidia dark, erumpent, collapsed at the top into a disc; conidia pale, aseptate, straight, smooth, oblong, rounded at the ends and enclosed by halo of conidial slime, vibratory, 3.5-5.5 (-9) x 2-2.5  $\mu\text{m}$ .
22. **Phoma** sp. on *Bignonia magnifica*, Tutkon, 29-xii-1977 (LAM 220486b). Note: pycnidia erumpent, ostiolate; conidia hyaline to pale, clavato-elongate to fusiform-elliptical, aseptate, smooth, simple, ?slimy, 5.5 – 7.5 x 1.5 – 2.0  $\mu\text{m}$ . Cf. **Phoma bignoniae** Sacc., E. Bommer & M. Rousseau on *Tecoma radicans* and **Phyllosticta bignoniicola** Vasant Rao & Solank as *bignonicola* on *Bignonia unguis-cati*.
23. **Phoma** sp. on *Bixa orellana*, Yezin, 29-i-1978 (LAM 220546). Cf. **Phyllosticta bixina** E. Young on and from the same host sp.
24. **Phoma** sp. on *Borassus flabellifer* L., Salin, 14-xi-1972 (IMI 187213b). Cf. **Phoma balliensis** R.C. Srivast. 1979 and **P. borassi** R.C. Srivast. 1979 on the same host sp.
25. **Phoma** sp. on *Calliandra guindingii*, Myay Padetha, Rangoon, 30-i-1975 (IMI 191509).
26. **Phoma** sp. on *Capsicum annuum* (on stem), Tutkon, 10-vii-1977 (LAM 220167). Cf. **Phoma capsici** var. **caulicola** Bianchin., and **Phoma glomerata** isolated from this host genus (Boerema & Dorenbosch. 1973).
27. **Phoma** sp. on *Carallia brachiata*, Pynmana, 15-xii-1977 (LAM 220538). Note: pycnidia erumpent, ostiolate; conidia broadly oblong to ellipsoid or clavate or subglobose, pale, smooth, 10 x 6  $\mu\text{m}$ . Cf. **Phoma rhizophorae** Tassi.
28. **Phoma** sp. on *Clerodendrum serratum*, Hmawbi Farm, 26-x-1979 (LAM 220652a). Cf. **Phoma clerodendricola** Henn., **Phyllosticta clerodendri** Syd.{} & E.J. Butler and **Phyllosticta clerodendri** Bat., R. Garnier & J.L. Bezerra from *Clerodendrum* spp.
29. **Phoma** sp. on *Corchorus olitorius*, Yezin, 19-ix-1977 (LAM 220545). Cf. **Phoma corchori** Sawada, **P. corchorina** Sawada, **P. corchororum** Bat. & Silva{} reported on stems and leaves of the same host sp.
30. **Phoma** sp. on *Coreopsis tinctoria*, Rangoon, 24-ix-1979 (LAM 220669b). Cf. **Phoma exigua** Desm. var. **exigua** isolated from this host genus (Boerema & Dorenbosch. 1973).
31. **Phoma** sp. on *Crinum amabile*, Rangoon, 18-x-1979 (LAM 220603d). Cf. **Phoma crinicola** (Siemaszko) Boerema, i.e. a **Dothiorella** sp. per Khune apud R.S. Mathur 1979.
32. **Phoma** sp. on *Euphorbia neriifolia*, Myaungmya, 13-xi-1979 (LAM 220693b). Note: hyaline, subglobose, restless conidia, 2-3.5  $\mu\text{m}$  in diam., with a pale halo (?slime), escaping in tendrils from pycnidia. Cf. **Phoma euphorbiae** Sacc., **P. euphorbiae** f. **amplior** Brunaud, **P. euphorbiae** f. **euphorbiae** Sacc., **P. euphorbiae-spinosae** Bubák, **P. euphorbiicola** (Schwein.) Starbäck, **P. euphorbophila** Oudem.
33. **Phoma** sp. on *Gomphrena globosa*, Rangoon, 25-ix-1979 (LAM 220670b). Cf. **Phoma** spp. on *Amaranthus*, **Phyllosticta gomphrenae** Sacc. & Speg., and **P. gomphrenicola** Speg. on the same host sp.

34. **Phoma** sp. on *Helianthus annuus*, Mandalay, 2-x-1979 (LAM 220747c). Cf. **Phoma exigua** Desm. (Boerema & Dorenbosch. 1973) and **P. helianthi** Pachkhede, Vyaw. & Shreem. from the same host sp. in India.
35. **Phoma** sp. on *Jatropha podagraica*, Rangoon, 20-xi-1979 (LAM 220730b). Note: conidia broadly elliptical, oval to subclavate, hyaline, aseptate, biguttulate, 5.5 – 7.5 x 3.5 µm. Cf. **Phoma jatrophae** Shreem. on *Jatropha* spp.
36. **Phoma** sp. on *Lagerstroemia speciosa*, Mandalay (Civil Lines), 25-iv-1975 (IMI 194458a). Note: fungus in greyish white leafspots; conidia 9-11 x 5.5–6.5 µm. Cf. **Phoma lagerstroemiae** var. **lagerstroemiae** Speg.
37. **Phoma** sp. on *Lantana aculeata*, Maymyo, 28-i-1974 (IMI 182584a). Cf. **Phoma lantanae** Verwoerd & Duplessis on *L. camara*.
38. **Phoma** sp. on *Leucaena glauca*, Botanical Garden, Maymyo, 23-iii-1974 (IMI 185235).
39. **Phoma** sp. on *Licuala ?peltata*, Rangoon, 6-x-1979 (LAM 220666d). Note: conidia hyaline, oblongo-ellipsoid, biguttulate, 3.5-4 x 2 µm.
40. **Phoma** sp. on *Markhamia stipulata*, Kyaukpadaung, 4-i-1974 (IMI 185228b).
41. **Phoma** sp. on ?*Mesua ferrea*, Rangoon, 10-viii-1972 (IMI 170088). Note: pycnidium globoid to ellipsoid, filled with tiny, sphaeroid, spore-like bodies.
42. **Phoma** sp. on *Mimusops elengi*, Tadau, 17-xii-1977 (LAM 420432).
43. **Phoma** sp. on *Papilionaceae* - wild bean plant, near Melamu Pagoda, Rangoon, 23-ix-1979 (LAM 220649e). Note: conidia 3.5-7.5 x 2.5-3.0 µm.
44. **Phoma** sp. on *Piper nigrum*, Taikkyi Farm, 25-x-1979 (LAM 220638c). Note: conidia pale, oblong to broadly ellipsoid with rounded ends, 6 x 2.5 µm. Cf. **Phoma piperis** (Tassi) Aa & Boerema.
45. **Phoma** sp. on *Pithecolobium bigeminum*, Thaton, 28-xii-1977 (LAM 220491b) in brownish spots.
46. **Phoma** sp. on ?*Polyalthia longifolia*, Mandalay, 23-ix-1971 (IMI 160364).
47. **Phoma** sp. on *Salacca wallichiana*, Rangoon, 25-xii-1977 (LAM 220544). Note: conidia hyaline, oblongo-ellipsoid, biguttulate, 3.5-4.5 x 2-2.5 µm.
48. **Phoma** sp. on *Saraca indica* (Vernacular = *Thaw Ka*, Asoka Tree), Maymyo, 28-xi-1973 (IMI 185660). Note: pycnidium - typical, dark, thin-walled, globose, immersed, containing hyaline, oblong conidia occasionally attenuated or usually rounded at the ends, 18.5 – 19.4 x 3.7 µm (relatively large size).
49. **Phoma** sp. on *Theobroma cacao*, Rangoon, 5-xii-1979 (LAM 220755). Note: conidia hyaline, aseptate, elongate to ovoid, guttulate, 11 x 3.5 µm.
50. **Phoma** sp. on Tree ferns, Rangoon, 27-x-1979 (LAM 220726e). Note: pycnidia thin-walled; conidia subhyaline or pale olivaceous, short oblong to subglobose with rounded ends, 3.5 - 4.5 x 2-2.5 µm.
48. 1. **Phomopsis ailanthi** (Sacc.) Died. (Anamorphic **Diaporthe ailanthi** Sacc.) on *Ailanthus triphysa*, Botanical Garden, Maymyo, 12-ii-1974 (IMI 183228).
2. **Phomopsis anacardii** Earle. & Punith. on *Anacardium occidentale*, Rangoon, 5-iv-1973 (IMI 177287a); Burma (Punithalingam 1985b).
3. **Phomopsis bakeri** Syd. on *Ficus religiosa*, Maymyo, 27-v-1972 (IMI 183232).
4. **Phomopsis bambusae** (Mohanani 1994, 1997, *invalid name*) on living leaves of *Bambusa wamin*, Zoological Garden, Rangoon, i-xii-1974 (IMI 190429a); *B. vulgaris*, Rangoon, 15-iv-1975 (IMI 193707). It is also found on *Bambusa* bamboos, *Dendrocalamus strictus* Nees, and *Thyrsostachys oliveri* in India (C. Mohanan pers. comm).

- 2006). Note: mycelium brown, septate, flexuous, mostly at the margin of the conidiomata; pycnidia with irregular folds or convoluted;  $\alpha$ -conidia typically fusoid, tinted, borne singly on well-developed conidiophores,  $\beta$ -conidia hyaline, continuous, filiform, hamate.
5. ***Phomopsis bougainvilleae*** Sousa da Câmara on *Bougainvillea spectabilis*, Central Maternity Hospital Compound, Rangoon, 21-viii-1973 (IMI 179283).
  6. ***Phomopsis buteae*** Sahni on *Butea monosperma*, Mandalay, 2-i-1974 (IMI 185669). Note: pycnidia convex, thick-walled, immersed; conidia hyaline, fusoid, 6-8 x 2-3  $\mu$ m.
  7. ***Phomopsis citri*** H.S.Fawc. (Anamorphic ***Diaporthe citri*** F.A. Wolf) on stem of *Citrus medica* var. *acida*, Nyaungbinzauk village, east of Myitnge, 9-xi-1971 (IMI 166361b).
  8. ***Phomopsis digitalis*** D. Hawksw. & Punith. on *Digitalis lanata*, Agricultural Experiment Station, Maymyo, 18-v-1975 (IMI 194480a).
  9. ***Phomopsis durionis*** Syd. on *Durio zibethinus*, Moulmein, 31-v-1971 (IMI 157833); Syriam, 27-iv-1972 (IMI 172433); Moulmein, 20-iv-1972 (IMI 172434); Bassein, 18-ii-1972 (IMI 172435). Note: pycnidia with hyaline to very pale greenish, ovoid to oblong conidia, and long conidiophores.
  10. ***Phomopsis heveae*** (Petch) Boedijn on *Hevea brasiliensis*, Mudon, 29-vi-1972 (IMI 167192).
  11. ***Phomopsis millettiae*** Swarup, L.S. Chauban & Tripathi on *Millettia* sp., Mandalay, 10-x-1974 (IMI 188966); *Millettia xylocarpa*, Kyaukchaw Range east of Mandalay, 14-ii-1975 (IMI 191511).
  12. ***Phomopsis obscurans*** (Ellis & Everh.) B. Sutton on *Fragaria vesca*, general in Burma (Thaung 1970a).
  13. ***Phomopsis pavgii*** D.D. Shukla, V.N. Pathak & M. Rao on *Jasminum* sp., Mandalay, 1-iii-1972 (IMI 171313);
  - Aungban, S.S.S., 27-xii-1979 (LAM 220863).
  14. ***Phomopsis phaseoli*** (Desm.) Grove (Anamorphic ***Diaporthe phaseolorum*** var. ***batatatis*** (Harter & E.C. Field) Wehm.) on *Ipomoea reptans*, Mandalay, 2-x-1972 (IMI 187211).
  15. ***Phomopsis vexans*** (Sacc. & P. Syd.) Harter (Anamorphic ***Diaporthe vexans*** Gratz) on *Solanum melongena*, Mandalay, 27-xi-1973 (IMI 180789).
  16. ***Phomopsis*** sp. on *Bignonia magnifica*, Madaya, 10-iv-1971 (IMI 172440c). Cf. ***Phomopsis bignoniae*** (Sacc., E. Bommer & Roussel) Curzi & Barbaini, ***P. majuscula*** Sacc. and ***P. tecomae*** (Sacc.) Traverso & Spessa, all on *Tecoma radicans*.
  17. ***Phomopsis*** sp. on *Casimiroa edulis*, Agricultural Experiment Station, Maymyo, 18-v-1975 (IMI 194481a).
  18. ***Phomopsis*** sp. on *Chrysophyllum cainito*, Maymyo, 2-ii-1973 (IMI 183244). Note: subhyaline, oblong to clavate conidia in a pycnidium. Cf. ***Phomopsis chrysophylli*** (P. Syd.) Aa.
  19. ***Phomopsis*** sp. on *Cinnamomum inunctum*, Madaya, 6-x-1972 (IMI 170559); Moulmein, 25-v-1975 (LAM 220098); *C. obtusifolium*, Moulmein, 12-i-1974 (IMI 185670); *C. ?zeylanicum*, Mandalay, 9-x-1974 (LAM 220203); *C.* sp., Maymyo, 13-iv-1972 (IMI 175724). Note: specimen (LAM 220098) has thick-walled, immersed, subglobose pycnidia with hyaline, fusoid, conidia 8-10 x 3.0  $\mu$ m. Cf. ***Phomopsis tezpatae*** S.M. Singh ( $\alpha$ -conidia 5-10 x 1.6-2.25  $\mu$ m), ***P. cinnamomi*** S.M. Lin & P.K. Chi, ***P. cinnamomicola*** Z.D. Jiang, M.M. Xiang & P.K. Chi.
  20. ***Phomopsis*** sp. on *Codiaeum variegatum*, Mandalay, 11-v-1975 (IMI 194464b).
  21. ***Phomopsis*** sp. on *Dracaena* or *Cordyline* sp., Rangoon, 10-viii-1975 (IMI 197653). Cf. ***Phomopsis dracaenae*** Sahni on *D. brachystachys*, and ***P. cordylines*** Ponnappa on *Cordyline terminalis* var. *ferreae*.

22. **Phomopsis** sp. on *Ebenaceae* probably *Diospyros* sp. (Vernacular = *Kadipathee*, velvet fruit), Mandalay, 13-x-1971 (IMI 164828b). Cf. **Phomopsis diospyri** (Sacc.) Traverso & Spessa and later three others with same homonym.
23. **Phomopsis** sp. on *Hiptage ?candicans*, Mingun, 29-vi-1972 (IMI 167191).
24. **Phomopsis** sp. on *Litsea* sp. (Vernacular = *On-don*), Nyaungbinzauk village near Myitnge, 20-ii-1972 (IMI 183224). Cf. **Phomopsis litseae** Kamal & R.P. Singh on *L. chinensis*.
25. **Phomopsis** sp. on *Livistona speciosa*, Myaypadetha, Rangoon, 30-iii-1973 (IMI 175748a). Cf. **Phomopsis elaeidis** Punith. and **P. palmicola** (G. Winter) Sacc.
26. **Phomopsis** sp. on *Murraya* sp., Sagaing, 20-xi-1973 (IMI 180777a).
27. **Phomopsis** sp. on *Nephelium leppaceum*, Moulmein/Tavoy, 10-iv-1973 (IMI 175740a?). Cf. **Phomopsis nephelii** (Delacr.) Vanev & Aa on same host sp.
28. **Phomopsis** sp. on *Ochna ?pumila*, Rangoon, 4-xii-1974 (IMI 190926a); 30-vi-1979 (LAM 220756). Note: pycnidia thin-walled; conidia hyaline, clavato-cylindric to fusoid, 3.5 – 7.5 x 2 – 2.5 µm.
29. **Phomopsis** sp. on *Pithecolobium bigeminum*, Aungban, S.S.S., 26-iii-1973 (IMI 175721c). Cf. **Phomopsis machaeriicola** Petr.
30. **Phomopsis** sp. on *Ravenala madagascariensis*, General Hospital Compound, Rangoon, 15-viii-1972 (IMI 169355b).
31. **Phomopsis** sp. on *Salacca wallichiana* Mart., Mergui, 7-v-1980 (LAM 220922f). Note: pycnidia thin-walled; conidia elliptic to fusoid, 7.5 x 1.5-2.0 µm. Cf. **Phomopsis palmicola** (G. Winter) Sacc.
32. **Phomopsis** sp. on *Sideroxylon tomentosum*, Mandalay, 30-iii-1972 (IMI 166354).
33. **Phomopsis** sp. on *Streblus asper*, Kyonpyaw, 5-iv-1975 (LAM 220133).
49. 1. **Phyllosticta anacardiacearum** Aa (≡ *Phyllostictina mangiferae* Bat. & A.F. Vital) on *Mangifera indica*, Mandalay, 29-ix-1971 (IMI 160354), 12-x-1971 (IMI 161267a), 10-iii-1972 (IMI 172432).
2. **Phyllosticta arecae** Höhn. (≡ *Phyllostictina arecae* (Höhn.) Petr. & Syd., *Phyllostictina banosensis* Petr.) on leaves and fruits of *Areca catechu*, Bilin, collector E.J. Butler: no. 1661, 14-i-1908 (Aa & Vanev 2002); Madaya (Rhind & Seth 1945); Myaungmya, 28-iii-1973 (IMI 175749); *Caryota urens*, Rangoon, 4-iv-1973 (IMI 175728).
3. **Phyllosticta artocarpina** Syd., P. Syd. & E.J. Butler (≡ *Phyllostictina artocarpina* (Syd., P. Syd. & E.J. Butler) Syd.) on *Artocarpus integra*, Madaya, 9-iv-1972 (IMI 169352a); Thekon, 6-iv-1972 (IMI 169361); *A. rigida*, Ye (Yay), Tenasserim, 10-viii-1972 (IMI 170560).
4. **Phyllosticta bougainvilleae** de Câmara on *Bougainvillea spectabilis*, Mandalay, 4-i-1974 (IMI 185668b). Note: pycnidia globose, yellowish brown, thin-walled, papillato-ostiolate, with small, ovoid to shortly oblong conidia. It is redisposed in **Phoma** (Aa & Vanev 2002).
5. **Phyllosticta capitalensis** Henn. (≡ *Phyllostictina pyriformis* E.K. Cash & A.M.J. Watson) on Bamboo orchid (?*Arundina bambusifolia*), Rangoon, 10-iv-1972 (IMI 166355).
6. **Phyllosticta chrysanthemi** Ellis & Dearn. on *Chrysanthemum indicum*, 5-ii-1970 (IMI 146678).
7. **Phyllosticta citricarpa** (McAlpine) Aa on *Citrus decumana*, Amarapura, 20-v-1973 (LAM 220166).
8. **Phyllosticta dioscoreae** Cooke on *Dioscorea pentaphylla*, Yezin, near Pyinmana, 19-xi-1972 (IMI 171314).
9. **Phyllosticta ghaesembillae** (Petr.) Aa on *Codiaeum variegatum*, Rangoon, 5-ix-1975 (LAM 220861); *Codiaeum* sp.,

- Pahte island, Mergui, 8-v-1980 (LAM 220926).
10. ***Phyllosticta glochidii*** (Syd.) Aa on *Glochidion multiloculare*, Kyaikhto, 15-v-1971 (IMI 157610 b).
  11. ***Phyllosticta gossypina*** Ellis & Martin 1886 on *Gossypium* sp., Patheingyi, Mandalay District, 10-vi-1973 (IMI 177239b). Note: it is redispersed in ***Phoma*** (Aa & Vanev 2002).
  12. ***Phyllosticta mali*** Prill. & Delacr. on *Pyrus malus*, Maymyo?, 19-i-1970 (IMI 146046a); *Pyrus communis*, Aungban, S.S.S., 10-vii-1977 (LAM 220134).
  13. ***Phyllosticta murrayicola*** Aa (= *Phyllostictina murrayae* Syd. & P. Syd.) on *Murraya exotica*, Amarapura, 20-v-1975 (LAM220862); Mandalay, 21-v-1972 (IMI 175723), 31-v-1973 (IMI 180190); *M. koenigii*, Shwebo, 23-ix-1973 (IMI 180189).
  14. ***Phyllosticta musarum*** (Cooke) Aa (= *Phyllostictina musarum* (Cooke) Petr.) on leaves of *Musa* sp., Sint-gaing near Kyaukse, 20-iii-1975 (LAM 220056).
  15. ***Phyllosticta* ?*piperis-betle*** Sawada on *Piper betle*, Myay-Pade-Tha, Rangoon, 26-iv-1975 (IMI 194460b).
  16. ***Phyllosticta religiosa*** Syd. on *Ficus religiosa* throughout Burma (Rhind & Seth 1945); *Ficus* sp., Pindaya, S.S.S., 10-i-1978 (LAM 220868b). Note: pycnidia subglobose, 140.5 x 111 µm.; conidia pale to hyaline, subglobose to globose or shortly oblong, 3.5-5.5 (-7.5) x 2-2.5 (-3.5) µm. It is redispersed in ***Phoma*** (Aa & Vanev 2002).
  17. ***Phyllosticta tamarindicola*** V.G. Rao on leaves of *Tamarindus indica*, Mandalay, 2-xi-1971 (LAM 220102); 25-xi-1971 (IMI 162838); Pindaya, S.S.S., 28-xii-1979 (LAM 220860). Note: conidia subhyaline to hyaline, subglobose to globose or oblong to oblongo-ellipsoid or ellipsoid, biguttulate, 3.5-7.5 x 3-3.5 µm. This sp. is redispersed in ***Phoma*** (Aa & Vanev 2002) and so is ***P. tamarindiana*** Sudhir Chandra & Tandon (N.N. Khnue 1977 apud R.S. Mathur 1979).
  18. ***Phyllosticta*** sp. on *Alpinia conchigera*, Myay-Padetha, Rangoon, 30-iii-1973 (IMI 157726); *A. officinarum*, Myay-Padetha, Rangoon, 30-iii-1973 (IMI 175725). Cf. ***Phyllosticta alpiniae*** Batista (= ***Phoma*** sp. Aa & Vanev) on and from *Alpinia speciosa* and ***P. alpiniae - kelungensis*** Sawada on *Alpinia kelungensis*.
  19. ***Phyllosticta*** sp. on *Anacardium occidentale*, Rangoon, 5-iv-1973 (IMI 177287b). Cf. ***Phyllosticta anacardiicola*** (as *anacardicola*) Batista & A.F. Vital (= ***Fusicoccum*** sp. Aa & Vanev) on and from the same host sp. and ***Phomopsis anacardii*** Early & Punith.
  20. ***Phyllosticta*** sp. on *Artabotrys ?odoratissimus*, Taungmyo, 7-xi-1974 (IMI 190427b) with hyaline, oblong, 5.5 x 1.8 – 2.5 µm, conidia borne singly on well-developed, distinct conidiophores. Cf. ***Phyllosticta artabotrycola*** V.G. Rao (= ***Phoma*** sp. Aa & Vanev; also apud Mathur) from the same host sp. in India, bearing ovoidal, 1-celled, hyaline, conidia (4.2–8.5 x 3.2 – 4.5 µm), and ***Phomopsis artabotrydis*** Syd. & P. Syd. on *Artabotrys uncinatus* in India.
  21. ***Phyllosticta*** sp. on *Bauhinia malabarica*, Kyaukse village, en route Maymyo. 29-vi-1972 (IMI 167190). Note: most probably ***Phoma macrostoma*** var. ***macrostoma*** as *macrostomum* per Boerema et al. (2004). Cf. ***Phyllosticta bauhiniicola*** Henn. as *bauhinicola*, also. Taxa hitherto reported on *Bauhinia* as ***Phyllosticta*** spp. belong to either ***Phoma*** or ***Phomopsis*** (Aa & Vanev 2002).
  22. ***Phyllosticta*** sp. on *Calophyllum inophyllum*, Rangoon, 7-iii-1980 (LAM 220912). Note: pycnidia subepidermal, subglobose to globose, inostiolate, dark brown, 148-177.5 µm in diam., with wall 15-22 µm thick; conidia subglobose to globose or obovoid to short oblong or shortly and broadly ellipsoid, pale or subhyaline, 7.5-13 µm in diam., 1(- 2) -guttulate; guttules greenish and one is large. Cf. ***Macrophoma calophylli*** Syd. on the same host sp. from India and ***Phyllosticta calophylli*** Cif. G. Fragoso from *Calophyllum calaba*.

23. **Phyllosticta** sp. on *Cinnamomum camphora*, Myay-Pade-Tha Kyun, Rangoon, 26-iv-1975 (IMI 194461c); Kyon-pyaw, 4-v-1975 (LAM 220204). Cf. **Phyllosticta cinnamomi** Delacr., **P. cinnamomi-glanduliferi** Henn., and **P. cinnamomi-zeylanici** Bat. & Silva.
24. **Phyllosticta** sp. on *Cosmos* sp., Rangoon, 20-iv-1978 (LAM 220416d). Note: **Phoma herbarum** Westend. has been reported on this host from India.
25. **Phyllosticta** sp. on *Croton oblongifolius*, Namsan, Loilem District, S.S.S., 6-viii-1972 (IMI 170075). Cf. **Phyllosticta crotonina** V.G. Rao (= **Macrophomina phaseolina** (Tassi) Goidánich per Mathur 1979), **Phyllosticta portoricensis** Young and **Phomopsis crotonophila** (Speg.) Aa on *Croton* sp.
26. **Phyllosticta** sp. on *Eugenia* sp., Inya Lakeside, Rangoon, 10-v-1972 (IMI 169351); Chaung-na-khwa, 5-v-1972 (IMI 172451); Mandalay, 10-x-1972 (IMI 172452) with hyaline, irregularly globose conidia in a typical pycnidium. Cf. **Phyllosticta eugeniae** P.A. Young, **P. eugeniae** C.C. Chen, and **P. syzygii** Bat. (as *sizygi*).
27. **Phyllosticta** sp. on *Garcinia mangostana* as black dots in spots, Mudon Farm, 5-i-1978 (LAM 220766a). Note: pycnidia dark, globose; conidia pale olivaceous, elliptic, 5.5 x 2.5 µm singly, net 44.5 µm in diam. in a globose mass enclosed by a hyaline (?mucilaginous) sheath about 5.5 µm thick. The entire mass escaped intact when pycnidium was squashed. Cf. **Phyllosticta evernia** (Syd.) Aa on *Garcinia livingstonei* from India.
28. **Phyllosticta** sp. on *Gardenia* sp., Popa, 12-iv-1974 (IMI 185666). Note: pycnidia thin-walled, immersed, ostiolate; conidia small, subhyaline, subglobose to globose, 3.7 – 7.4 µm. Cf. **Phyllosticta gardeniae** Cooke, **P. gardeniae** Tassi, **P. gardeniicola** Sawada, **P. gardeniicola** Mhaskar (as *gardenicola*), **Phomopsis gardeniae** Buddin & Wakef. and **Pyrenochaeta gardeniae** S. Chandra & Tandon.
29. **Phyllosticta** sp. on *Garuga pinnata*, Yankin Hill near Mandalay, 5-xi-1971 (IMI 182586). Cf. **Phomopsis garugae** N.D. Sharma on the same host sp. from India.
30. **Phyllosticta** sp. on *Litsaea* sp., Popa, 31-xii-1972 (IMI 183225).
31. **Phyllosticta** sp. on *Pithecolobium bigeminum*, Maymyo, 19-i-1970 (IMI 144744a); Thaton, 28-i-1972 (IMI 163854); Myitkyina, 19-vi-1980 (LAM 220934). Note: conidia subglobose with greenish content and slimy layer, 9.5 x 7.5 µm. This is certainly a new true sp. of *Phyllosticta* on *Pithecolobium* and *Machaerium* spp. since it differs from those hitherto reported thereon as **Phyllosticta pithecellobii**'s in shape, size, presence of slimy layer around conidia and of its teleomorph: **Guignardia**. Cf. **Phyllosticta ingae-dulcis** Died. (Saccardo 1931) on *Pithecolobium (Inga) dulce* from India, also.
32. **Phyllosticta** sp. on *Plumbago rosea*, Moulmein, 8-xii-1974 (LAM 220097b). Cf. **Phyllosticta plumbaginicola** V.G. Rao (= *P. plumbaginis* (Ponnappa) Khune ex R.S. Mathur) on and from *Plumbago zeylanica* in India.
33. **Phyllosticta** sp. on *Polyalthia longifolia*, Mandalay, 23-ix-1971 (IMI 172436). Cf. **Phyllosticta polyalthiicola** V.G. Rao (as *polyalthicola*) (= **Sphaeropsis** sp. Khune apud Mathur, = **Phoma** sp. Aa & Vanev) on the same host sp. from India, bearing ellipsoidal, 1-celled, hyaline conidia, 5.1-6.3 x 3.3-4.2 µm
34. **Phyllosticta** sp. on *Pterocarpus* sp., Mandalay, 28-i-1972 (IMI 163855a). Cf. **Phomopsis pterocarpi** Hughes (= *Phyllosticta pterocarpi* Sawada) on *Pterocarpus indicus*.
35. **Phyllosticta** sp. on *Zephyranthes candida*, Rangoon, 28-ix-1979 (LAM 220644c). Note: pycnidia thick-walled, dark brown; conidia globose or subglobose, hyaline, full of greenish grains, 7.5 – 9.5 µm in diam.

50. 1. **Podoxyphium** sp. as anamorphic **Scorias** on living leaves of *Camellia thea*, Namsan, N.S.S., 31-v-1971 (IMI 157831) with cylindrical pycnidia on long and wide stipes; *Coffea arabica*, Myitkyina, 1-x-1971 (IMI 160467); *Duranta repens* L., Myitkyina, 29-vi-1972 (IMI 167188a); *Eupatorium* sp., Rangoon, 27-iii-1976 (IMI 202555). Note: elongate cylindrical pycnidia with fimbriate subapical inflation and unicellular hyaline spores.
51. 1. **Polynema** (= *Belaina*) sp. on *Pandanus foetidus*, Rangoon, 18-viii-1979 (LAM 220547) manifesting setose, cupulate or acervulus-like conidiomata and hyaline conidia each with 3-4 separate arms, arising from the apex of a long, ?clavate stalk cell.
52. 1. **Pseudorobillarda** spp. on *Bougainvillea spectabilis*, Rangoon, 11-xi-1979 (LAM 220728b); *Dioscorea* sp., Rangoon, 5-xii-1979 (LAM 220765); *Hydnocarpus kurzii*, Rangoon, 5-xii-1979 (LAM 220897).
53. 1. **Pyrenochaeta oryzae** Shirai ex Miyake causing sheath blotch on leaves and sheaths of *Oryza sativa* throughout Burma (Punithalingam 1980b, Rhind & Seth 1945).
2. **Pyrenochaeta** sp. on *Bougainvillea spectabilis*, Rangoon, 12-ix-1977 (LAM 220205).
3. **Pyrenochaeta** sp. on *Calathea* sp. (Vernacular = *Daung-pho gamon*), Hmawbi Farm, 26-x-1979 (LAM 220761).
4. **Pyrenochaeta** sp. on *Dahlia* sp., Rangoon, 5-xii-1979 (LAM 220725c).
5. **Pyrenochaeta** sp. on *Hedyotis* or ?*Spermacece* sp., Taikkyi Farm, 25-x-1979 (LAM 220648b).
6. **Pyrenochaeta** sp. on *Solanum ?torvum* (leafspots), Rangoon, 21-xii-1979 (LAM 220811b) with a setose, thin-walled, erumpent, depressed-globose, occasionally confluent pycnidium bearing hyaline, biguttulate, oblong or suboblong or subglobose spores, 3.5 – 5 (-5.5) x 2.5 – 3.0  $\mu\text{m}$ . Cf. **Paraphoma** Morgan-Jones & J.F. White for *Phoma* with setose pycnidia, e.g. *Pyrenochaeta radicina* McAlpine. *Paraphoma* spp. are typical soil fungi often associated with monocots (Boerema *et al.* 2004).
54. 1. **Seimatosporium** sp. on *Eucalyptus* sp., University campus, Mandalay, 1-xii-1973 (IMI 181620). Cf. **Vermisporium eucalypti** (McAlpine) Nag Raj (= *Seimatosporium eucalypti* (McAlpine) Swart).
55. 1. **Septoria bakeri** Syd. on *Leucas aspera*, Taungmyo near Mandalay, 1-xii-1973 (IMI 181631); Myitkyina, 18-vi-1980 (LAM 220938). Note: conidia 37-45 x 2.0  $\mu\text{m}$ .
2. **Septoria calendulae** Bernaux on *Calendula officinalis*, Mandalay, 11-i-1974 (IMI 181634b); Rangoon, 27-x-1979 (LAM 220623b) with conidia 31.5 x 2.5-3  $\mu\text{m}$ .
3. **Septoria callistephi** Gloyer on *Callistephus chinensis*, Rangoon, 8-xi-1973 (IMI 180771).
4. **Septoria chrysanthemella** Sacc. on *Chrysanthemum sinense*, Pyinmana, 13-ii-1973 (IMI 173549); Mandalay, 23-x-1973 (IMI 180188b); *Chrysanthemum* sp., Taunggyi, S.S.S., 1-xii-1977 (LAM 220867).
5. **Septoria dolichi** Berk. & M.A.Curtis in leafspots on *Dolichos lablab*, Kalaw, S.S.S., 12-i-1978 (LAM 220489).
6. **Septoria lablabina** Sacc. on *Dipterocarpus obtusifolius* (Black specks), Vegetable Bazaar, Rangoon, 10-xii-1979 (LAM 220760) with hyaline, flexuous, 15-18 x 1.25  $\mu\text{m}$ , conidia; *Dolichos lablab*, Mandalay, 5-ii-1970 (IMI 144745); *Phaseolus calcaratus*, Pindaya, S.S.S., 10-xii-1977 (LAM 220759).
7. **Septoria leguminum** Desm. on legume, Mandalay, 2-v-1971 (IMI 160358a).
8. **Septoria lycopersici** Speg. on *Lycopersicum esculentum*, Mandalay, 19-xii-1971 (IMI 164825).

9. **Septoria nesodes** Kalchbr. on *Centella* sp., Botanical Garden, Maymyo, 12-ii-1974 (IMI 185239).
10. **Septoria** sp. on *Dahlia* sp., Rangoon, 5-xii-1979 (LAM 220725d) with conidia 15-18.5 x 2  $\mu$ m. Cf. **Septoria dahliae** Dzhilag.
11. **Septoria** sp. on *Ficus ?cunia*, Pindaya, S.S.S., 10-i-1978 (LAM 220868a). Cf. **Septoria fici-indicae** Voglino, **S. arcuata** Cooke, **S. brachyspora** Sacc., **S. pipulae** Cooke on *Ficus* sp.
12. **Septoria** sp. on *Fragaria vesca*, Aungban, S.S.S., 27-xii-1979 (LAM 220865a) with thin-walled, ostiolate, erumpent pycnidia, and subhyaline to hyaline, straight or bent or flexuous, septate, smooth conidia, obtuse or truncate ends, 8.5 -9 x 2  $\mu$ m. Cf. **Septoria fragariaecola** Lobik on the same host sp., **S. aciculosa** Ellis & Everh and **S. geranii** Rob. & Desm. on *F. indica*.
13. **Septoria** sp. on *Hydrocotyle asiatica*, Rangoon, 5-xii-1979 (LAM 220528) with septate, filiform, conidia, 17-26 x 2-2.5  $\mu$ m. Cf. **Septoria hydrocotyles** Desm. on *H. javanica*, **S. asiatica** Speg. and **S. nosodes** Kalchbr. on the same host sp.
14. **Septoria** sp. on *Ipomoea purpurea*, Onchaw village, Shwezayan, East of Mandalay, 1-iv-1972 (IMI 166351) in dark spots.
15. **Septoria** sp. on *Musa sapientum* var. *arakanensis*, Kyaukthanbut village, east of Yezin campus, 25-vii-1977 (LAM 220137c).
56. 1. **Sphaeropsis musarum** Cooke ( $\equiv$  *Macrophoma musarum* (Cooke) Berl. & Voglino) on leaves of *Musa sapientum*, throughout Burma (Rhind & Seth 1945).
2. **Sphaeropsis** ( $\equiv$  *Macrophoma*) sp. on *Carissa carandas*, Mandalay, 25-xi-1971 (IMI 162840); *Crinum asiaticum*, Rangoon, 30-iii-1973 (IMI 175727) Cf. **Macrophoma crinicola** N.D. Sharma on the same host sp.
57. 1. **Stagonospora** ( $\equiv$  *Hendersonia*) sp. in leaf-spots on *Ficus infectoria*, near Ein-daw-ya Pagoda, Mandalay, 8-v-1973 (LAM 220869); *Phragmites* sp., Kyaunggon, 10-xii-1977 (LAM 220526c), *Phrynium ?capitatum*, Aungban, S.S.S., 27-xii-1979 (LAM 220857b); *Pyrus malus*, Maymyo, 28-xii-1972 (IMI 176164b). Cf. **Stagonospora phragmiticola** Hansf., **S. phragmitis** (Oudem.) Leuchtm., **S. pyricola** S. Ahmad (as *pyricola*) on branches of *Pyrus communis* and **Hendersonia pyricola** Sacc. Note: specimen on *Ficus* (close to **S. caricinella** Brun.) has pycnidia (148 x 130  $\mu$ m), and hyaline to pale olivaceous, attenuato-oblong or ellipsoideo-oblong, 3-septate conidia, 15 -18.5 x 3.5 - 4  $\mu$ m.
58. 1. **Stigmella effigurata** (Schwein.) S. Hughes on *Eugenia* sp., Kayah State, 15-i-1975 (IMI 192809) and (LAM 220029).
59. 1. **Stigmopeltis ?phoebes** Syd. on *Beilschmiedia* sp., Botanical Garden, Maymyo, 12-ii-1974 (IMI 188957).
60. 1. **Tetranacrium gramineum** H.J. Huds. & B. Sutton on bamboo, Myitkyina, 29-xii-1977 (LAM 220490a).
61. 1. **Urohendersonia indica** Syd. on *Erythrina crista-galli*, Botanical Garden, Maymyo, 15-x-1972 (IMI 170562); Burma (Sutton 1980).

### Results and Discussion

The inventory allows some observations on diversity and distribution of coeloanamorphoses although it is not comprehensive and accurate enough for such analysis and assessment. The diversity and frequency vary among 61 genera collected, being highly salient in *Asteromella*, *Colletotrichum*, *Pestalotiopsis*, *Phoma*, *Phomopsis*, *Phyllosticta*, and *Septoria* (Fig. 1, Table 1). Their saliency adds up to some 81% of the total sp. diversity displayed by all coelomycetes so far gathered. The variation is apparently related to the variety and availability of the host plant in local flora, the interaction between the fungus inhabitant and the weather, and the influence of the complex environment. The diversity can be represented as a percent index based on worldwide sp. census of an individual genus. Thus the global diversity index in Burma for *Asteromella* is 3%; *Colletotrichum*, 41%; *Pestalotiopsis*, 28%; *Phoma*, 22%; *Phomopsis*, 15%; *Phyllosticta*, 28%; and *Septoria*, 1% (Fig. 2, Table 2).



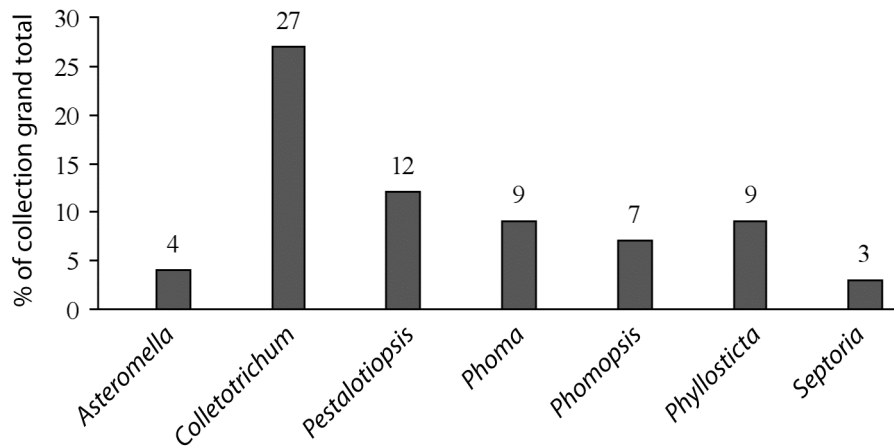


Figure 1. Collection frequencies of salient taxa.

Table 1. Summary of coelomycetes, their species diversity, and collection frequencies

Form-genera	+ST	*CT	%T	Form-genera	+ST	*CT	%T
1. <i>Ampelomyces</i>	1	1		32. <i>Macrophoma</i>	1	1	
2. <i>Aplosporella</i>	3	3		33. <i>Macrophomina</i>	1	7	
3. <i>Aposphaeria</i>	3	3		34. <i>Macrophomopsis</i>	4	4	
4. <i>Aschersonia</i>	10	11		35. <i>Marssonina</i>	3	5	
5. <i>Ascochyta</i>	11	15		36. <i>Microdiplodia</i>	8	8	
6. <i>Asteromella</i>	26	28	4	37. <i>Microsphaeropsis</i>	2	3	
7. <i>Bartalinia</i>	1	3		38. <i>Monochaetinula</i>	1	2	
8. <i>Ceuthospora</i>	1	1		39. <i>Nattrassia</i>	1	1	
9. <i>Coleophoma</i>	2	2		40. <i>Parahyalotiopsis</i>	1	1	
10. <i>Colletogloeum</i>	1	3		41. <i>Pestalotia</i>	4	4	
11. <i>Colletotrichum</i>	16	172	27	42. <i>Pestalotiopsis</i>	38	76	12
12. <i>Coniella</i>	4	4		43. <i>Pestalozzina</i>	1	1	
13. <i>Coniothyrium</i>	2	16		44. <i>Phaeocystostroma</i>	1	3	
14. <i>Cryptocline</i>	1	1		45. <i>Phaeoseptoria</i>	2	2	
15. <i>Cylindrosporium</i>	1	4		46. <i>Phloeospora</i>	4	5	
16. <i>Cytoplea</i>	1	1		47. <i>Phoma</i>	50	55	9
17. <i>Cytospora</i>	5	5		48. <i>Phomopsis</i>	33	44	7
18. <i>Diplodia</i>	8	10		49. <i>Phyllosticta</i>	35	56	9
19. <i>Diplozythiella</i>	1	1		50. <i>Podoxyphium</i>	4	4	
20. <i>Discosia</i>	1	1		51. <i>Polynema</i>	1	1	
21. <i>Discosporium</i>	1	1		52. <i>Pseudorobillarda</i>	3	3	
22. <i>Discula</i>	1	1		53. <i>Pyrenochaeta</i>	6	6	
23. <i>Erythroglloeum</i>	1	1		54. <i>Seimatosporium</i>	1	1	
24. <i>Fusamen</i>	1	1		55. <i>Septoria</i>	15	21	3
25. <i>Fusicoccum</i>	2	2		56. <i>Sphaeropsis</i>	3	3	
26. <i>Harknessia</i>	1	1		57. <i>Stagonospora</i>	3	3	
27. <i>Idiocercus</i>	1	1		58. <i>Stigmella</i>	1	1	
28. <i>Jubispora</i>	1	1		59. <i>Stigmopeltis</i>	1	1	
29. <i>Lasiodiplodia</i>	1	16		60. <i>Tetranacrium</i>	1	1	
30. <i>Lasmeniella</i>	1	1		61. <i>Urohendersonia</i>	1	1	
31. <i>Leptodothiorella</i>	3	3		Grand Total	343	638	81

+ST=Specimen Total. \*CT= Collection Total. %T = % of Grand Total of \*CT

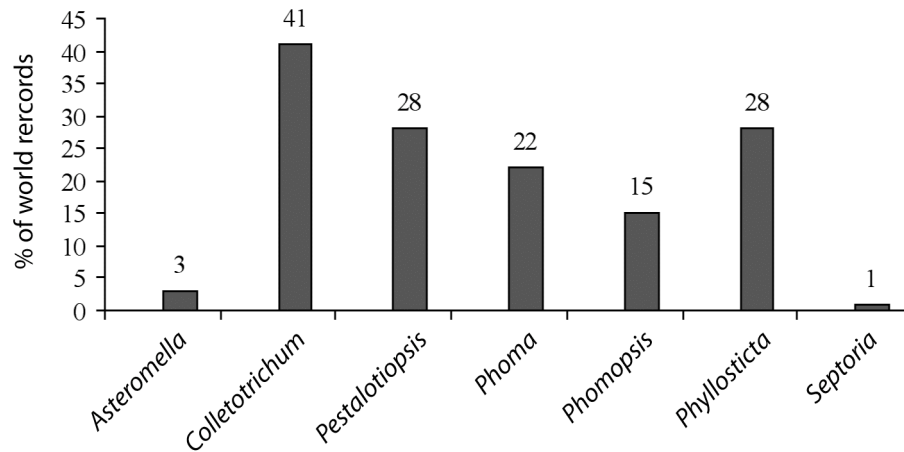


Figure 2. Biodiversity index of salient taxa.

Table 2. Biodiversity Index of salient taxa of coelomycetes in Burma on world scale

Form Genus	No. of sp. in Burma	No. on world records	% of world records	Sources of world records. (conservative estimates*) *Not from world databases
1. <i>Asteromella</i>	4	140	3	(Sutton 1980)
2. <i>Colletotrichum</i>	16	39	41	(Sutton 1992)
3. <i>Pestalotiopsis</i>	14	50	28	(Hawksworth 2005)
4. <i>Phoma</i> (sect. <i>Phoma</i> )	12	41 – 68 = 55	22	(Boerema <i>et al.</i> 2004)
5. <i>Phomopsis</i>	15	100	15	(Kiffer and Morelet 2000)
6. <i>Phyllosticta</i>	17	60	28	(Aa and Vanev 2002)
7. <i>Septoria</i>	9	1000 -2000	1	(Sutton 1980)

The disparity in their frequency can be attributed to the dissimilarity of their conidiomata, conidia, and infection process since *Colletotrichum* and *Pestalotiopsis* outnumber and outrun the others in collections. Morphologically, *Colletotrichum* is well equipped with appressoria, and *Pestalotiopsis* with appendages, to secure contact for host penetration and to propel for dispersion, respectively. The collection frequency (Fig. 1) clearly corresponds with the biodiversity index (Fig. 2).

Among 16 spp. of *Colletotrichum* present in Burma, *C. capsici*, *C. gloeosporioides*, *C. graminicola*, and *C. orbiculare* are cumulative and complex with wide host ranges.

*Colletotrichum acutatum* and *C. gloeosporioides* are hardly distinguishable morphologically. *C. acutatum* is therefore presumably present in Burma among isolates of *C. gloeosporioides* from rubber in light of molecular separation of the former from the latter on the same host sp. in neighboring countries India and Sri Lanka (Jayasinghe *et al.* 1997; Saha *et al.* 2002).

*Pestalotiopsis* demonstrates no host-specificity despite its spp. being named largely on host-basis (Jeewon *et al.* 2002; Hawksworth 2005). Intriguingly, *P. palmarum* is, however, encountered in Burma principally on members of palm family. *Monochaetia* and *Truncatella* or their allies are likely to be found increasingly

via derivation where days are long and UV-rich suns are strong in view of UV light effect on color of the median cells of *Pestalotiopsis* (Worapong *et al.* 2001).

This snapshot captures and documents the diversity, distribution, demographics and dynamics of coelomycetes in action as they occur on plants, and interact with others in the tropical, monsoon vegetation of Burma.

### Host Index

**Acacia** [Leguminosae] **A. arabica** Willd. — *Jubispora acaciae*; **A. concinna** DC. — *Pestalotiopsis* sp.; **A. leucophloea** Willd. — *Bartalinia robillardoides*; **A. pennata** Willd. — *Diplodia* sp.

**Acanthus** [Acanthaceae] **A. ilicifolius** L. — *Coleophoma* sp.

**Achras** [Sapotaceae] **A. sapota** L. — *Pestalotiopsis versicolor*.

**Adhatoda** [Acanthaceae] **A.** sp. — *Colletotrichum gloeosporioides*.

**Ailanthus** [Simaroubaceae] **A. triphysa** (Dennst.) Alston — *Phomopsis ailanthi* (= *Diaporthe ailanthi*).

**Albizia** [Leguminosae] **A. kalkora** Prain or **lebbek** Benth — *Colletotrichum capsici*.

**Aleurites** [Euphorbiaceae] **A. montana** E.H.Wilson — *Colletotrichum gloeosporioides*, *Pestalotia* sp.

**Allium** [Alliaceae] **A. cepa** L. — *Phoma* sp.

**Alpinia** [Zingiberaceae] **A. conchigera** Griff. — *Phoma* sp., *Phyllosticta* sp.

**Amaranthus** [Amaranthaceae] **A.** sp. — *Phoma* sp.

**Anacardium** [Anacardiaceae] **A. occidentale** L. — *Phomopsis anacardii*, *Phyllosticta* sp.

**Anethum** [Apiaceae] **A. graveolens** L. — *Phoma anethi*.

**Annona** [Annonaceae] **A. muricata** L. — *Colletotrichum gloeosporioides*; **A. reticulata** L. — *Colletotrichum gloeosporioides*; **A. squamosa** L. — *Colletotrichum gloeosporioides*.

**Anogeissus** [Combretaceae] **A. acuminata** Wall. — *Coniella granati*.

**Antigonon** [Polygonaceae] **A. leptopus** Hook & Arn. — *Pestalotiopsis* sp.

Araceae — *Colletotrichum capsici*, *C. gloeosporioides*.

**Arachis** [Leguminosae] **A. hypogea** L. — *Colletotrichum gloeosporioides*, *Macrophomina phaseolina*, *Phoma* sp.

**Araucaria** [Araucariaceae] **A.** sp. — *Pestalotiopsis microspora*

**Ardisia** [Myrsinaceae] **A. polycephala** Wall. — *Colletotrichum gloeosporioides*.

**Areca** [Arecaceae] **A. catechu** L. — *Colletotrichum gloeosporioides*, *Lasiodiplodia theobromae*, *Pestalotiopsis palmarum*, *Phoma* sp., *Phyllosticta arecae*.

**Arenga** [Arecaceae] **A. saccharifera** Labill. — *Pestalotiopsis palmarum*.

**Aristolochia** [Aristolochiaceae] **A. indica** L. — *Colletotrichum gloeosporioides*.

**Artabotrys** [Annonaceae] **A. burmanicus** DC. — *Ascochyta* sp., *Coleophoma* sp., *Coniothyrium fuckelii*, *Lasiodiplodia theobromae*, **A. odoratissimus** R.Br. — *Colletotrichum gloeosporioides*, *Coniothyrium fuckelii*, *Phyllosticta* sp.

**Artocarpus** [Moraceae] **A. communis** Forst. — *Colletotrichum gloeosporioides*, *Phyllosticta* sp.; **A. integra** Merr. — *Pestalotiopsis* sp., *Phyllosticta artocarpina*; **A. rigidus** Blume — *Phoma* sp., *Phyllosticta artocarpina*.

**Arundina** [Orchidaceae] **A. bambusaefolia** Lindl. — *Phoma* sp., *Phyllosticta capitalensis*.

**Asparagus** [Asparagaceae] **A.** sp. — *Colletotrichum gloeosporioides*, *Phoma asparagina*.

**Averrhoa** [Oxalidaceae] **A. carambola** L. — *Asteromella* sp., *Phoma* sp.

**Azima** [Salvadoraceae] **A. sarmentosa** Benth. & Hook.f.Gen. — *Colletotrichum gloeosporioides*.

- Baccaurea** [Euphorbiaceae] **B. sapida** Müll.Arg. — *Aschersonia* sp.
- Bamboo [Poaceae] Bamboo — *Ascochyta scotinospora*, *Coniothyrium fuckelii*, *Tetranacrium gramineum*.
- Bambusa** [Poaceae] **B. polymorpha** Munro — *Ascochyta scotinospora*; **B. siamensis** Kurz — *Microdiplodia maculata*; **B. vulgaris** Schrad. — *Phomopsis bambusae*; **B. wamin** E.G. Camus (Rhind) — *Phomopsis bambusae*; **B.** sp. — *Diplozythiella bambusina*.
- Bauhinia** [Leguminosae] **B. malabarica** Roxb. — *Phyllosticta* sp., **B. purpurea** L. — *Colletotrichum gloeosporioides*.
- Beilschmiedia** [Lauraceae] **B.** sp. — *Stigmopeltis ?phoebes*.
- Berberis** [Berberidaceae] **B. nepalensis** Spreng. — *Pestalotiopsis japonica*.
- Beta** [Chenopodiaceae] **B. vulgaris** L. — *Ascochyta betae*.
- Bignonia** [Bignoniaceae] **B. magnifica** Bull — *Bartalinia robillardoides*, *Pestalotiopsis* sp., *Phoma* sp., *Phomopsis* sp., *Colletotrichum gloeosporioides*.
- Bischofia** [Euphorbiaceae] **B. javanica** Blume — *Phloeospora* sp.
- Bixa** [Bixaceae] **B. orellana** L. — *Colletotrichum gloeosporioides*.
- Bouea** [Anacardiaceae] **B. burmanica** Griff. — *Pestalotiopsis versicolor*, *Phoma fimeti*.
- Bombax** [Bombacaceae] **B. malabaricum** DC. — *Asteromella* sp., *Colletotrichum gloeosporioides*.
- Borassus** [Arecaceae] **B. flabellifer** L. — *Macrophomopsis* sp., *Microdiplodia* sp., *Parahyalotiopsis borassi*, *Pestalotiopsis palmarum*, *Phoma* sp.
- Bougainvillea** [Nyctaginaceae] **B. spectabilis** Willd. — *Asteromella* sp., *Colletotrichum capsici*, *C. gloeosporioides*, *Phomopsis bougainvilleae*, *Phyllosticta bougainvilleae*; *Pseudorobillarda* sp., *Pyrenochaeta* sp.
- Bulbophyllum** [Orchidaceae] **B. auricomum** Lindl. — *Macrophomopsis* sp..
- Butea** [Leguminosae] **B. monosperma** Kuntze — *Phomopsis buteae*.
- Cacao** [Sterculiaceae] **C.** sp. — *Colletotrichum gloeosporioides*.
- Cactaceae (Night-flowering) sp. — *Colletotrichum gloeosporioides*.
- Caesalpinia** [Caesalpiniaceae] **C. pulcherrima** (L.) Sw. — *Colletotrichum gloeosporioides*.
- Caesalpiniaceae or Papilionaceae — *Lasmeniella congoensis*.
- Cajanus** [Leguminosae] **C. cajan** Druce — *Macrophomina phaseolina*.
- Calamus** [Arecaceae] **C. arborescens** Griff. — *Pestalotiopsis palmarum*, *P. theae*, *P. versicolor*; **C.** sp. — *Colletotrichum gloeosporioides*.
- Calathea** [Marantaceae] **C.** sp. (Vernacular = Daung-pho-gamon) — *Pyrenochaeta* sp.
- Calendula** [Asteraceae] **C. officinalis** L. — *Septoria calendulae*.
- Calliandra** [Leguminosae] **C. guidingii** Benth. — *Phoma* sp.
- Callistemon** [Myrtaceae] **C. lanceolatus** (Sm.) Sweet — *Colletotrichum gloeosporioides*, *Pestalotiopsis* sp.
- Callistephus** [Asteraceae] **C. chinensis** Nees — *Asteromella* sp., *Mycosphaerella* sp., *Septoria callistephi*.
- Calophyllum** [Clusiaceae] **C. inophyllum** L. — *Colletotrichum gloeosporioides*, *Diplodia* sp., *Microdiplodia* sp., *Pestalotiopsis* sp., *Phaeosphaeria* sp., *Phyllosticta* sp.; **C.** sp. — *Colletotrichum gloeosporioides*, *Cytospora* sp.
- Calotropis** [Asclepiadaceae] **C. gigantea** (Willd.) R. Br. — *Colletotrichum gloeosporioides*.
- Camellia** [Theaceae] **C. thea** Link — *Colletotrichum coccodes*, *Pestalotiopsis theae*, *Podoxyphium* sp.

- Capparis** [Capparaceae] **C. hastigera** Hance. — *Colletotrichum gloeosporioides*; **C.** sp. — *Colletotrichum capsici*.
- Capsicum** [Solanaceae] **C. annuum** L. — *Colletotrichum capsici*, *C. coccodes*, *C. nigrum*, *Phoma* sp.
- Carallia** [Rhizophoraceae] **C. brachiata** Merr. — *Phoma* sp.
- Carica** [Caricaceae] **C. papaya** L. — *Colletotrichum gloeosporioides*, *Phoma papayae*,
- Careya** [Myrtaceae] **C. arborea** Roxb. — *Aschersonia* sp.
- Carum** [Apiaceae] **C. copticum** Benth. & Hook.f. — *Colletotrichum gloeosporioides*.
- Caryota** [Arecaceae] **C. urens** — *Aplosporella* sp., *Asteromella* sp., *Cytospora* sp., *Lasiodiplodia theobromae*, *Phyllosticta arecae*.
- Casimiroa** [Rutaceae] **C. edulis** S. Watson — *Colletotrichum gloeosporioides*, *Phomopsis* sp.
- Cassia** [Caesalpinaceae] **C. alata** L. — *Asteromella* sp.; **C. ?siamea** Lam. — *Colletotrichum gloeosporioides*.
- ?**Cedrela** [Meliaceae] **C. serrata** Royle (Vernacular = Taung-tama) — *Marssonina* sp.
- Ceiba** [Bombacaceae] **C. pentandra** Gaertn. — *Lasiodiplodia theobromae*.
- Centella** [Apiaceae] **C.** sp. — *Septoria nesodes*.
- Chrysanthemum** [Asteraceae] **C. indicum** L. — *Phyllosticta chrysanthemi*; **C. sinense** Sabine — *Septoria chrysanthemella*.
- Chrysophyllum** [Sapotaceae] **C. cainito** L. — *Phomopsis* sp.
- Cinchona** [Rubiaceae] **C.** sp. — *Lasiodiplodia theobromae*.
- Cinnamomum** [Lauraceae] **C. camphora** T. Nees & Eberm. — *Coniothyrium fuckelii*, *Microdiplodia* sp., *Phyllosticta* sp.; **C. ?inunctum** Meissn. — *Colletotrichum gloeosporioides*, *Pestalotiopsis* sp., *Phoma cinnamomi*, *Phomopsis* sp.; **C. obtusifolium** Nees — *Colletotrichum gloeosporioides*, *Phomopsis* sp.; **C. ?zeylanicum** Breyne — *Phomopsis* sp.; **C.** sp. — *Pestalotiopsis* sp.
- Citrus** [Rutaceae] **C. decumana** L. and **C. medica** L. — *Ascochyta citri*; *Diplodia natalensis*, *Phyllosticta ?citricarpa*; **C. medica** var. **acida** (Roxb.) Hook.f. — *Aplosporella hesperedica*, *Pestalotiopsis adusta*, *Phomopsis citri*; *Pleosphaeropsis* sp.; **C. nobilis** Lour. — *Diplodia natalensis*; **C.** spp. — *Aposphaeria citricola*, *Colletotrichum gloeosporioides*.
- Clerodendron** [Verbenaceae] **C. macrosiphon** Hook.f. — *Colletotrichum gloeosporioides*, *Microsphaeropsis* sp.; **C. serratum** Spreng — *Pestalotiopsis* sp., *Phoma* sp.; ?**C.** sp. (Vernacular = Phet-kha) — *Lasiodiplodia theobromae*.
- Clytostoma** [Bignoniaceae] **C. binatum** (Thunb.) Sandwith — *Coniothyrium fuckelii*.
- Cocos** [Arecaceae] **C. nucifera** L. — *Colletotrichum gloeosporioides*, *Coniothyrium fuckelii*, *Pestalotiopsis palmarum*, *P. phoenicis*.
- Codiaeum** [Euphorbiaceae] **C. variegatum** (L.) A. Juss. — *Colletotrichum gloeosporioides*, *Phomopsis* sp., *Phyllosticta ghaesembillae*; **C.** sp. — *Phyllosticta ghaesembillae*.
- Coffea** [Rubiaceae] **C. arabica** L. — *Colletotrichum coffeanum*, *Podoxyphium* sp.
- Coix** [Poaceae] **C.** sp. — *Phoma sorghina*.
- Combretum** [Combretaceae] **C. trifoliatum** Vent. — *Colletotrichum gloeosporioides*.
- Corchorus** [Tiliaceae] **C. olitorius** L. — *Colletotrichum corchori*, *Diplodia ?corchori*, *Phoma* sp.
- Cordyline** [Agavaceae] **C.** species — *Phomopsis* sp.
- Coreopsis** [Asteraceae] **C. tinctoria** Nutt. — *Phoma* sp.
- Cosmos** [Asteraceae] **C.** sp. — *Phyllosticta* sp.

- Costus** [Costaceae] **C. speciosus** Sm. — *Colletotrichum gloeosporioides*.
- Craibiodendron** [Ericaceae] **C. henryi** W.W. Sm. — *Asteromella* sp.
- Crateva** [Capparaceae] **C. religiosa** G.Forst. — *Colletotrichum gloeosporioides*.
- Crinum** [Amaryllidaceae] **C. amabile** Donn — *Colletotrichum gloeosporioides*, *Phoma* sp.
- Crotalaria** [Fabaceae] **C. juncea** L. — *Colletotrichum gloeosporioides* (*Colletotrichum curvatum*).
- Croton** [Euphorbiaceae] **C. oblongifolius** Wall. — *Colletotrichum crassipes*, *Pestalotiopsis japonica*, *Phyllosticta* sp.
- Cucurbita** [Cucurbitaceae] **C. pepo** Lour. — *Colletotrichum gloeosporioides*, *C. orbiculare*.
- Cycas** [Cycadaceae] **C.** sp. — *Microdiplodia cycadella*.
- Cydonia** [Rosaceae] **C. cathayensis** Hemsl. — *Asteromella* sp.
- ?**Cyperus** [Cyperaceae] **C. alternifolius** L. — *Pestalotiopsis palmarum*; **C.** sp. (Vernacular = Nwa-myeet myet = oxtail grass) — *Pestalotiopsis hughesii*.
- Dahlia** [Asteraceae] **D.** sp. — *Colletotrichum capsici*, *Pyrenochaeta* sp., *Septoria* sp.
- Dalbergia** [Leguminosae] **D. cultrata** Graham — *Asteromella* sp.; **D. ovata** Graham — *Aschersonia placenta*, *Colletotrichum gloeosporioides*,
- Dianthus** [Caryophyllaceae] **D. chinensis** L. — *Colletotrichum capsici*.
- Digitalis** [Scrophulariaceae] **D. lanata** Ehrh. — *Phomopsis digitalis*.
- Dioscorea** [Dioscoreaceae] **D. bulbifera** L. — *Colletotrichum gloeosporioides*; **D. pentaphylla** L. — *Phyllosticta dioscoreae*; **D. sativa** L. — *Colletotrichum gloeosporioides*; **D.** sp. — *Pseudorobillarda* sp.
- Dipterocarpus** [Dipterocarpaceae] **D. ?obtusifolius** Teijsm. ex Miq. — *Macrophomina phaseolina*, *Septoria lablabina*; **D.** sp. — *Macrophomina phaseolina*.
- Dolichos** [Leguminosae] **D. lablab** L. — *Colletotrichum lindemuthianum*, *Septoria dolichi*, *S. lablabina*.
- Dracaena** [Dracaenaceae] **D. angustifolia** Roxb. — *Colletotrichum gloeosporioides*; **D. sanderiana** Hort. Sand. — *Colletotrichum gloeosporioides*; **D.** sp. — *Phomopsis* sp.
- Dregea** [Asclepiadaceae] **D. volubilis** Benth. ex Hook.f. — *Colletotrichum gloeosporioides*.
- Duranta** [Verbenaceae] **D. repens** L. — *Podoxyphium* sp.
- Durio** [Bombacaceae] **D. zibethinus** Murr. — *Macrophomina phaseolina*, *Phomopsis durionis*.
- Ebenaceae [? **Diospyros** sp.] — *Coniothyrium fuckelii*, *Phomopsis* sp.
- Elaeis** [Arecaceae] **E. guineensis** Jacq — *Aposphaeria* sp., *Colletotrichum gloeosporioides*, *Endocalyx melanoxanthus*, *Pestalotiopsis palmarum*.
- Eleusine** [Poaceae] **E. ?indica** (L.) Gaertn. — *Colletotrichum sublineolum*.
- Eriobotrya** [Rosaceae] **E. japonica** Lindl. — *Pestalotiopsis longiaristata*.
- Erysiphales on **Sechium** [Cucurbitaceae] **S. edule** Sw. — *Ampelomyces quisqualis*
- Erythrina** [Fabaceae] **E. crista-galli** L. — *Urohendersonia indica*; **E.** sp. — *Ascochyta erythrinae*.
- Eucalyptus** [Myrtaceae] **E. camaldulensis** Dehnh. — *Coniella minima*, *C. petrakii*; **E. saligna** Sm. — *Pestalotiopsis mangiferae*, *P. theae*; **E. tereticornis** Sm. — *Pestalotiopsis mangiferae*; **E.** sp. — *Colletotrichum gloeosporioides*, *Cytospora eucalypticola*, *Phaeoseptoria eucalypti*, *Seimatosporium* sp.
- Eugenia** [Myrtaceae] **E.** spp. — *Bartalinia robillardoides*, *Colletotrichum gloeosporioides*, *Cytospora* sp., *Discosporium eugeniae*, *Fusicoccum* sp.,

- Pestalotiopsis palmarum*, *P. versicolor*, *Phyllosticta* sp., *Stigmella effigurata*.
- Eupatorium** [Asteraceae] **E.** sp. — *Podoxyphium* sp.
- Eurycles** [Amaryllidaceae] **E. amboinensis** (L.f.) Lindl. — *Asteromella* sp., *Colletotrichum gloeosporioides*, *Leptodothiorella* sp.
- Feronia** [Rutaceae] **F. elephantum** Correa — *Colletogloeum feroniae*; **F. limonia** Swingle — *Colletogloeum feroniae*.
- Ficus** [Moraceae] **F. elasticas** Roxb. — *Colletotrichum coccodes*, **F. ?carica** L. — *Colletotrichum crassipes*; **F. ?cunia** Ham. — *Septoria* sp.; **F. infectoria** Roxb. — *Stagonospora* sp.; **F. religiosa** L. — *Phomopsis bakeri*, *Phyllosticta religiosa*; **F.** sp. — *Colletotrichum gloeosporioides*.
- Fragaria** [Rosaceae] **F. vesca** L. — *Phomopsis obscurans*, *Septoria* sp.
- Fuirena** [Cyperaceae] **F.** sp. — *Pestalotia lepidospermatis*.
- Garcinia** [Clusiaceae] **G. mangostana** L. — *Diplodia natalensis*, *Pestalozzina* sp., *Phyllosticta* sp.; **G. cowa** Roxb. — *Leptodothiorella* sp.
- Gardenia** [Rubiaceae] **G. coronaria** Buch.-Ham — *Discula* sp.; **G. ?obtusifolia** Roxb. — *Asteromella* sp., **G.** sp. — *Phyllosticta* sp.
- Garuga** [Burseraceae] **G. pinnata** Roxb. — *Phyllosticta* sp.
- Gerbera** [Asteraceae] **G. jamesonii** Bolus — *Ascochyta gerberae*.
- Glochidion** [Euphorbiaceae] **G. multiloculare** Müell.Arg. — *Phyllosticta glochidii*
- Gomphrena** [Amaranthaceae] **G. globosa** L. — *Phoma* sp.
- Gossypium** [Malvaceae] **G.** sp. (Cotton) — *Colletotrichum gossypii*, *Phyllosticta gossypina*.
- Grass [Poaceae] **?Eulaliopsis binata** (Retz.) C.E.Hubb. — *Colletotrichum caudatum*.
- Grewia** [Tiliaceae] **G.** sp. — *Pestalotiopsis* sp.
- Helianthus** [Asteraceae] **H. annuus** L. — *Phoma* sp.
- Helicia** [Proteaceae] **H. erratica** Hook.f./**H. excelsa** Blume. — *Colletotrichum gloeosporioides*.
- Helicteres** [Byttneriaceae] **H. elongata** Wall. — *Aschersonia* sp.
- Hevea** [Euphorbiaceae] **H. braziliensis** (Willd. ex A. Juss.) Müll.Arg. — *Asteromella* sp., *Colletotrichum coccodes*, *C. crassipes*, *C. gloeosporioides*, *Lasiodiplodia theobromae*, *Pestalotiopsis* sp., *Phomopsis heveae*.
- Heynea** [Meliaceae] **H. trijuga** Roxb. — *Colletotrichum gloeosporioides*, *Pestalotiopsis* sp.
- Hibiscus** [Malvaceae] **H. sabdariffa** L. — *Pestalotiopsis neglecta*.
- Hiptage** [Malpighiaceae] **H. benghalensis** Kurz — *Monochaetina terminaliae*, **H. ?candicans** Hook.f. — *Phomopsis* sp.
- Hydnocarpus** [Flacourtiaceae] **H. kurzii** Warb. — *Pseudorobillarda* sp.
- Hydrocotyle** [Apiaceae] **H. asiatica** L. — *Septoria* sp.
- Hymenocallis** [Amaryllidaceae] **H. littoralis** (Jacq.) Salisb. — *Colletotrichum gloeosporioides*.
- Impatiens** [Balsaminaceae] **I. balsamina** L. — *Phoma nebulosa*.
- Imperata** [Poaceae] **I. ?cylindrica** (L.) P.Baeuv. — *Colletotrichum caudatum*, *Diplodia* sp.
- Ipomoea** [Convolvulaceae] **I. purpurea** (L.) Roth — *Septoria* sp.; **I. reptans** Poir. — *Phomopsis phaseoli*; **I. vitifolia** Sweet — *Phloeospora* sp.; **?I.** sp. — *Phloeospora* sp.
- Ixora** [Rubiaceae] **I. coccinea** L. — *Pestalotiopsis disseminata*; **I. nigricans** R.Br. — *Colletotrichum gloeosporioides*; **I. subsessilis** Wall. — *Colletotrichum gloeosporioides*.

**Jasminum** [Oleaceae] **J.** sp. — *Colletotrichum gloeosporioides*, *Coniothyrium fuckelii*, *Phomopsis pavgii*.

**Jatropha** [Euphorbiaceae] **J. gossypifolia** L. — *Asteromella* sp., *Colletotrichum gloeosporioides*; **J. podagrica** Hook. — *Colletotrichum gloeosporioides*, *Phoma* sp.

**Lagenaria** [Cucurbitaceae] **L. vulgaris** Ser. — *Colletotrichum orbiculare*.

**Lagerstroemia** [Lythraceae] **L. speciosa** Pers. — *Pestalotiopsis* sp., *Phoma* sp.; **L. villosa** Wall. — *Asteromella* sp., *Erythrogloeum* sp.

**Lantana** [Verbenaceae] **L. aculeata** L. — *Phoma* sp.

**Lasia** [Araceae] **L. heterophylla** Schott — *Colletotrichum gloeosporioides*.

Legume [Leguminosae] (Bean) plant — *Colletotrichum lindemuthianum*, *Phoma exigua* var. *exigua*, *Septoria leguminum*.

**Leucaena** [Mimosaceae] **L. glauca** (Willd.) Benth. — *Phoma* sp.

**Leucas** [Lamiaceae] **L. aspera** Spreng. — *Septoria bakeri*.

**Licuala** [Arecaceae] **L. ?peltata** Roxb. — *Pestalotiopsis palmarum*, *Phoma* sp.

Liliaceae (?**Pleomele** sp.) — *Colletotrichum gloeosporioides*.

**Limonia** [Rutaceae] **L. acidissima** L. — *Colletotrichum gloeosporioides*.

**Litsea** [Lauraceae] **L.** sp. (Vernacular = Ondon) — *Phomopsis* sp., *Phyllosticta* sp.

**Livistona** [Arecaceae] **L. speciosa** Kurz — *Coniothyrium concentricum*, *C. fuckelii*, *Pestalotiopsis* sp., *Phomopsis* sp.; **L.** sp. — *Pestalotiopsis palmarum*.

**Lycopersicum** [Solanaceae] **L. esculentum** Mill. — *Septoria lycopersici*.

Magnoliaceae (Vernacular = Tadaing-hmwe-gale) ?**Magnolia** sp. — *Coniothyrium fuckelii*, *Lasiodiplodia theobromae*, *Pestalotiopsis* sp.

**Mangifera** [Anacardiaceae] **M. indica** L. — *Colletotrichum gloeosporioides*, *Diplodia* sp., *Diplodia natalensis*, *Macrophomopsis* sp., *Pestalotiopsis mangiferae*, *Phyllosticta anacardiacearum*.

**Manihot** [Euphorbiaceae] **M. glaziovii** Müll.Arg. — *Lasiodiplodia theobromae*.

**Mansonia** [Sterculiaceae] **M. gagei** J.R.Drumm. — *Colletotrichum gloeosporioides*.

**Markhamia** [Bignoniaceae] **M. stipulata** Seem — *Phoma* sp.

**Melaleuca** [Myrtaceae] **M. leucadendron** L. — *Pestalotiopsis* sp.

**Mesua** [Clusiaceae] **M. ferrea** L. — *Ascochyta* sp., *Asteromella* sp., *Coniothyrium fuckelii*, *Fusicoccum* sp., *Microdiplodia* sp., *Phoma* sp.

**Milium** [Annonaceae] **M. velutina** Hook f. & Thomson — *Asteromella* sp.

**Millettia** [Leguminosae] **M. xylocarpa** Miq. — *Phomopsis millettiae*; **M.** sp. — *Phomopsis millettiae*.

**Mimusops** [Sapotaceae] **M. elengi** L. — *Colletotrichum gloeosporioides*, *Lasiodiplodia theobromae*, *Pestalotiopsis japonica*.

Moraceae (Vernacular = Ma-hlaing-bin) — *Colletotrichum gloeosporioides*.

**Morinda** [Rubiaceae] **M. angustifolia** Roxb. — *Colletotrichum gloeosporioides*.

**Murraya** [Rutaceae] **M. exotica** L. — *Phyllosticta murrayicola*; **M. koenigii** Spreng — *Colletotrichum gloeosporioides*, *Leptodothiorella* sp., *Phyllosticta murrayicola*; **M.** spp. — *Ceuthospora phacidoides*, *Colletotrichum crassipes*, *C. gloeosporioides*, *Coniothyrium fuckelii*, *Coniothyrium* sp., *Lasiodiplodia theobromae*, *Pestalotiopsis* sp., *Phoma glomerata*, *Phomopsis* sp.

**Musa** [Musaceae] **M. sapientum** L. — *Colletotrichum musae*, **M. sapientum** L. var. **rubra** Firminger — *Asteromella* sp.; var. **arakanensis** Ripley — *Septoria* sp.; **M.**



- sp. (banana) — *Leptodothiorella* sp., *Phyllosticta musarum*.
- Nephelium** [Sapindaceae] **N. lappaceum** L. — *Phomopsis* sp.; **N. lit-chi** Cambess. — *Cytospora* sp., *Microdiplodia litchii*.
- Nerium** [Apocynaceae] **N. odorum** Soland — *Colletotrichum gloeosporioides*, *Lasiodiplodia theobromae*, *Macrophomina phaseolina*.
- Ochna** [Ochnaceae] **O. ?pumila** Buch.-Ham. ex D. Don — *Pestalotiopsis* sp., *Phomopsis* sp.
- Olea** [Oleaceae] **O. europaea** L. — *Phoma glomerata*.
- Orchid — *Aplosporella* sp., *Colletotrichum crassipes*.
- Oryza** [Poaceae] **O. sativa** L. — *Diplodia oryzae*, *Microsphaeropsis glumarum*, *Phoma leveillei* var. *leveillei*, *Pyrenochaeta oryzae*.
- Pandanus** [Pandanaeae] **P. foetidus** Roxb. — *Polynema* sp.
- Papilionaceae — *Phoma* sp.
- Pentacme** [Dipterocarpaceae] **P. siamensis** Kurz — *Asteromella* sp., ?*Bahusakala* sp.
- Phaseolus** [Leguminosae] **P. calcaratus** Roxb. — *Septoria lablabina*.
- Phoenix** [Arecaceae] **P. paludosa** Roxb. — *Pestalotiopsis palmarum*.
- Phragmites** [Poaceae] **P. karka** (Retz.) Trin. ex Steud. — *Cytoplea orientalis*; **P.** sp. — *Stagonospora* sp.
- Phrynium** [Marantaceae] **P. ?capitatum** Willd. — *Colletotrichum gloeosporioides*, *Stagonospora* sp.
- Phyllanthus** [Euphorbiaceae] **P. reticulatus** Poir. — *Colletotrichum gloeosporioides*.
- Piper** [Piperaceae] **P. betle** L. — *Colletotrichum capsici*, *C. gloeosporioides*, *C. piperis*, *Phyllosticta ?piperis-betle*; **P. nigrum** L. — *Colletotrichum gloeosporioides*, *Pestalotia piperis*, *Phoma* sp.
- Pisum** [Leguminosae] **P. sativum** L. — *Ascochyta pisi*.
- Pithecolobium** [Mimosaceae] **P. bigeminum** Benth. — *Pestalotiopsis disseminata*, *Pestalotiopsis* sp., *Phoma* sp., *Phomopsis* sp., *Phyllosticta* sp.; **P. dulce** (Roxb.) Benth. — *Colletotrichum capsici*, *C. gloeosporioides*.
- Plumbago** [Plumbaginaceae] **P. rosea** L. — *Colletotrichum gloeosporioides*, *Pestalotiopsis* sp., ?*Phyllosticta* sp.
- Plumeria** [Apocynaceae] **P. acutifolia** Poir. — *Colletotrichum gloeosporioides*; **P. obtusa** L. — *Natrassia mangiferae*.
- Polyalthia** [Annonaceae] **P. longifolia** Benth. & Hook f. — *Discosia artocreas*, *Microdiplodia perpusilla*, *Phoma* sp., *Phyllosticta* sp.
- Prunus** [Rosaceae] **P. armeniaca** L. — *Asteromella mali*, *Colletotrichum gloeosporioides*; **P. communis** Huds. — *Asteromella mali*, *Harknessia ?globosa*.
- Psidium** [Myrtaceae] **P. guajava** L. — *Colletotrichum coccodes*, *Marssonina psidii*, *Pestalotiopsis psidii*.
- Pterocarpus** [Leguminosae] **P.** sp. — *Colletotrichum gloeosporioides*, *Lasiodiplodia theobromae*, *Phyllosticta* sp.
- Punica** [Lythraceae] **P. granatum** L. — *Colletotrichum gloeosporioides*.
- Pyrus** [Rosaceae] **P. malus** L. — *Ascochyta piricola*, *Colletotrichum gloeosporioides*, *Pestalotia malorum*, *Phaeoseptoria* sp., *Phoma glomerata*, *Phyllosticta mali*, *Stagonospora* sp.; **P. communis** L. — *Phyllosticta mali*.
- Quercus** [Fagaceae] ?**Q. lanceaefolia** Kurz — **Q. mespilifolia** Wall. — *Asteromella quercifolii*; **Q. serrata** Thunb. — *Pestalotiopsis glandicola*; **Q.** sp. — *Fusamen* sp.
- Quisqualis** [Combretaceae] **Q. indica** L. — *Colletotrichum capsici*, *C. gloeosporioides*.
- Rauvolfia** [Apocynaceae] **R. serpentina** Benth. ex Kurz — *Colletotrichum gloeosporioides*.

- Ravenala** [Strelitziaceae] **R. madagascariensis** J.F.Gmel. — *Pestalotiopsis palmarum*, *Phomopsis* sp.
- Rosa** [Rosaceae] **R. sp.** — *Colletotrichum gloeosporioides*, *Lasiodiplodia theobromae*, *Macrophoma camarana*, *Marssonina rosae*, *Pestalotiopsis* sp.
- Roystonea** [Arecaceae] **R. elata** (W.Bartram) F.Harper — *Asteromella* sp., *Coniothyrium fuckelii*, *Pestalotiopsis palmarum*.
- Rubiaceae — *Aschersonia tamurai*, **?Spermacoce/Hedyotis** sp. — *Pyrenochaeta* sp.
- Saccharum** [Poaceae] **S. officinarum** L. — *Ascochyta* sp., *Colletotrichum falcatum*, *Lasiodiplodia theobromae*, *Phaeocystostroma sacchari* var. *sacchari*, *Phoma annullata*, *P. sorghina*; **S. spontaneum** L. — *Diplodia* sp., *Phaeocystostroma sacchari* var. *sacchari*.
- Salacca** [Arecaceae] **S. wallichiana** Mart. — *Phoma* sp., *Phomopsis* sp.
- ?Salix** [Salicaceae] **S. sp.** — *?Cryptocline* sp.
- Saraca** [Leguminosae] **S. indica** L. — *Colletotrichum gloeosporioides*, *Phoma* sp.
- Scale insects [Coccidae] on leaves of bamboo — *Aschersonia badia*.
- Schima** [Ternstroemiaceae] **S. wallichii** Choisy — *Idiocercus* sp.
- Sesamum** [Pedaliaceae] **S. indicum** DC. — *Cylindrosporium sesami*; **S. orientale** L. — *Macrophomina phaseolina*.
- Sida** [Malvaceae] **S. sp.** — *Colletotrichum gloeosporioides*.
- Sideroxylon** [Sapotaceae] **S. tomentosum** Wall. — *Coniothyrium fuckelii*, *Pestalotiopsis disseminata*, *Phomopsis* sp.
- Solanum** [Solanaceae] **S. melongena** L. — *Ascochyta melongenae*, *Phomopsis vexans*; **S. ?torvum** Swartz — *Pyrenochaeta* sp.; **S. tuberosum** L. — *Colletotrichum coccodes*.
- Sorghum** [Poaceae] **S. nigricans** (Ruiz & Pav.) Snowden var. **angolense** (Rendle) Snowden — *Ascochyta sorghi*; **S. vulgare** Pers. — *Colletotrichum sublineolum*; **S. sp.** — *Ascochyta sorghi*, *Colletotrichum sublineolum*.
- Spondias** [Anacardiaceae] **S. ?pinnata** Kurz or **?dulcis** G.Forst — *Colletotrichum gloeosporioides*
- Sterculia** [Sterculiaceae] **S. alata** Wall. — *Colletotrichum gloeosporioides*.
- Streblus** [Moraceae] **S. asper** Lour. — *Aschersonia blumenaviensis*, *A. tamurai*, *Phomopsis* sp.
- Strychnos** [Loganiaceae] **S. sp.** — *Asteromella* sp.
- Tamarindus** [Leguminosae] **T. indica** L. — *Macrophomopsis* sp., *Pestalotiopsis* sp., *Phyllosticta tamarindiana*, *P. tamarindicola*.
- Tectona** [Verbenaceae] **T. grandis** L. f. — *Aschersonia cinnabarina*, *Asteromella tectonae*.
- Terminalia** [Combretaceae] **T. catappa** L. — *Asteromella terminaliae*, *Colletotrichum gloeosporioides*, *Monochaetina terminaliae*; **T. chebula** Retz. — *Asteromella* sp.
- Themeda** [Poaceae] **T. sp.** — *Colletotrichum graminicola*.
- Theobroma** [Byttneriaceae] **T. cacao** L. — *Colletotrichum gloeosporioides*, *Lasiodiplodia theobromae*, *Pestalotiopsis* sp., *Phoma* sp.
- Trevesia** [Araliaceae] **T. palmata** Vis. — *Colletotrichum gloeosporioides*.
- Trichosanthes** [Cucurbitaceae] **T. palmata** Roxb. — *Colletotrichum gloeosporioides*.
- Turnera** [Turneraceae] **T. ulmifolia** L. — *Colletotrichum gloeosporioides*.
- Vigna** [Leguminosae] **V. catjang** Walp. var. **sinensis** — *Phoma exigua* var. *exigua*.
- Vitis** [Ampelidaceae] **V. carnosae** Wall. — *Colletotrichum gloeosporioides*; **V. vinefera** L. — *Pestalotiopsis mangiferae*.
- Xylia** [Leguminosae] **X. dolabriformis** Benth. — *Asteromella* sp.

**Zea** [Poaceae] **Z. mays** L. — *Colletotrichum graminicola*, *Pestalotiopsis* sp.

**Zephyranthes** [Amaryllidaceae] **Z. candida** Herb. — *Colletotrichum gloeosporioides*, *Phyllosticta* sp., **Z. rosea** Lindl. — *Colletotrichum gloeosporioides*.

Zingiberaceae — *Aschersonia* sp.

**Ziziphus** [Rhamnaceae] **Z. jujuba** Lam. — *Ascochyta* sp.

Unknown plant (Chin vernacular = Fah) — *Phloeospora* sp.

Unknown plant (Vernacular = Hna-khaung-phyu-ywet-bin) — *Coniella fragariae*.

Unknown host (Chin vernacular = Kawp Thep) — *Phoma putaminum*.

Unknown plant (Chin vernacular = Na-hee) — *Leptodothiorella* sp.

Unknown plant (Vernacular = San-say-ywet) — *Colletotrichum gloeosporioides*.

Unknown plant (Vernacular = Taw-zabyit-new-yaing) — *Phloeospora* sp.

Unknown plant — *Pestalotiopsis* sp.

Unknown plant (ferns on trees). — *Phoma* sp.

### Acknowledgements

I am grateful to Drs J.E.M. Mordue, E. Punithalingam, and B.C. Sutton, formerly of the then Commonwealth Mycological Institute, Kew, U.K., for their help in this work.

### References

- Aa, H.A. van der (1973). Studies in *Phyllosticta* I. *Studies in Mycology, Baarn* **5**, 1-110.
- Aa, H.A. van der & Vanev, S. (2002). A revision of the species described in *Phyllosticta*. Centraalbureau voor Schimmelcultures, Utrecht. 510 pp.
- Arx, J.A. von (1957). Die Arten der Gattung *Colletotrichum* Corda. *Phytopathologische Zeitschrift* **29**, 413-468.
- Arx, J.A. von (1970). A revision of the fungi classified as *Gloeosporium*. *Bibliotheca Mycologica* **24**, 1 – 203.
- Bailey J.A. & Jeger M.J. (1992). *Colletotrichum*: Biology, Pathology and

- Control. CAB International, Wallingford, United Kingdom.
- Barnett, H. L. & Hunter, B. B. (1998). Illustrated Genera of Imperfect Fungi. 4th Edition. APS Press, St. Paul, Minnesota. Collier Macmillan Publishers, London.
- Boerema, G. H. & Dorenbosch, M. M. J. (1973). The *Phoma* and *Ascochyta* species described by Wollenweber and Hochapfel in their study on fruit-rotting. *Studies in Mycology, Baarn* **3**, 1-50.
- Boerema, G.H., Gruyter, J. de, Noordaloo, M.E. & Hamer, M.E.E. (2004). *Phoma* Identification Manual. CAB International Publishing, U.K.
- Butler, E.J. (1918). Fungi and Disease in Plants. Thacker, Spink & Co. Calcutta, India. 547 pp.
- Butler, E.J. & Bisby, G.R. (1931). The fungi of India. Scientific Monograph No. 1. The Imperial Council of Agricultural Research. Government of India Central Publication Branch, Calcutta, India.
- Cannon, P.F., Bridge, P.D. & Monte, E. (2000). Linking the Past, Present, and Future of *Colletotrichum* Systematics in D. Prusky, S. Freeman & M.B. Dickman (eds.). *Colletotrichum Host Specificity, Pathology, and Host-Pathogen Interaction*, pp. 1-20. The American Phytopathological Society, St. Paul, Minn., USA.
- Department of Agriculture, Burma. (1940). Reports on the operations of the Department of Agriculture, Burma, Rangoon, for the years ended 31 March 1937, 1938, 1939, 1940.
- Dron, M. & Bailey, J.A. (1999). Improved control of bean anthracnose disease in Latin America and Africa through increased understanding of pathogen diversity. Project # TS3-CT93-214. Tropical and Subtropical Agriculture, Third STD Programme, 1992-1995. Summary reports of European Commission supported STD-3 Projects (1992-1995). 177 pp. (<http://www.agricita.org/pubs/std/vol2/pdf/214.pdf>).
- Elizabeth, J. & Mordue, M. (1967). *Colletotrichum graminicola*. *IMI Descriptions of Fungi and Bacteria* **14**, 132.
- Gregson, W. (1936). The Mangosteen in Burma. Agricultural Survey No. 23 of 1935. Department of Agriculture, Burma, Rangoon. Superintendent, Government Printing & Stationery, Burma. 15 pp.
- Guba, E.F. (1961). *Monograph of Monochaetia and Pestalotia*. Harvard Univ. Press, Cambridge, Mass.

- Hawksworth, D.L. (2005). Host specificity in *Pestalotiopsis*. *Mycological Research* **109**, 5-5.
- Jayasinghe, C.K., Fernando, T.H.P.S. & Priyanka, U.M.S. (1997). *Colletotrichum acutatum* is the main cause of *Colletotrichum* leaf disease of rubber in Sri Lanka. *Mycopathologia* **137**, 53-56.
- Jeewon, R., Liew, E.C. & Hyde, K.D. (2002). Phylogenetic relationships of *Pestalotiopsis* and allied genera inferred from ribosomal DNA sequences and morphological characters. *Molecular Phylogenetics and Evolution* **25**(3), 378-92.
- Kiffer, E. & Morelet, M. (2000). *The Deuteromycetes*. Science Publishers, Inc. Enfield, NH, USA. 273 pp.
- Kinsey, G. C. (2002a). *Phoma nebulosa*. *IMI Descriptions of Fungi and Bacteria* **151**, 1504.
- Kinsey, G. C. (2002b). *Phoma putaminum*. *IMI Descriptions of Fungi and Bacteria* **151**, 1506.
- Mathur, R.S. (1979). *The Coelomycetes of India*. Bishen Singh Mahendra Pal Singh, Dehra Dun, India. 460 pp.
- Mel'nik, Vadim A. (1977). *Key to the fungi of the genus Ascochyta Lib. (Coelomycetes)*. Izdatel'stvo Nauka.; Leningrad; USSR. 246 pp., 98 fig.
- Michaelides, J., Hunter, L., Kendrick, B. & Nag Raj, T.R. (1979). *Synoptic Key to 200 Genera of Coelomycetes*. Department of Biology, University of Waterloo, Ontario, Canada. 42 pp.
- Mohan, C. (1994). *Diseases of Bamboos and Rattans in Kerala, India*. Kerala Forest Research Institute Research Report No.98. Peechi, Kerala, India. 120 pp.
- Mohan, C. (1997). *Diseases of Bamboos in Asia: An Illustrated Manual. International Network for Bamboo and Rattan*. Beijing, Eindhoven, New Delhi. 228 pp.
- Mordue, J. E. M. (1976). *Pestalotiopsis psidii*. *IMI Descriptions of Fungi and Bacteria* **52**, 515.
- Mordue, J. E. M. (1980). *Pestalotiopsis mangiferae*. *IMI Descriptions of Fungi and Bacteria* **68**, 676.
- Mordue, J.E.M. & Holliday, P. (1971). *Pestalotiopsis theae*. *IMI Descriptions of Fungi and Bacteria* **32**, 318.
- Mundkur, B.B. & Kheswalla, K.F. (1942). Indian and Burman species of the genera *Pestalotia* and *Monochaetia*. *Mycologia* **34**, 308-317.
- Nag Raj, T.R. (1993). Coelomycetous anamorphs with appendage-bearing conidia. Mycologue Publications, Waterloo, Ontario, Canada. 1101 pp.
- Punithalingam, E. (1979). *Ascochyta sorghi*. *IMI Descriptions of Fungi and Bacteria* **64**, 632.
- Punithalingam, E. (1980a). *Leptosphaeria coniothyrium*. *IMI Descriptions of Fungi and Bacteria* **67**, 663.
- Punithalingam, E. (1980b). *Pyrenochaeta oryzae*. *IMI Descriptions of Fungi and Bacteria* **67**, 666.
- Punithalingam, E. (1981). *Phoma* Sacc., *Phyllosticta* Pers. ex Desm. Material de apoyo. International Course on the identification of fungi and bacteria of agricultural importance. C.A.B. IMI (Mimeografiado). 18 pp.
- Punithalingam, E. (1985a). *Phoma sorghina*. *IMI Descriptions of Fungi and Bacteria* **83**, 825.
- Punithalingam, E. (1985b). *Phomopsis anacardii*. *IMI Descriptions of Fungi and Bacteria* **83**, 826.
- Rai, M.K. (2000). *The Genus Phoma, Identity and Taxonomy*. International Book Distributors, Book Sellers & Publishers, Dehra Dun, India.
- Rhind, D. & Seth, L.N. (1945). The fungi of Burma. *The Indian Journal of Agricultural Science* **15**, 142-155.
- Saccardo, P.A. (1883). *Hendersonia pyricola*. *Sylloge Fungorum* **2**, 52.
- Saccardo, P.A. (1902). *Colletotrichum camelliae* Masee. *Sylloge Fungorum* **16**, 1007.
- Saccardo, P.A. (1931). *Phyllosticta ingae-dulcis* Died. *Sylloge Fungorum* **25**, 48.
- Saha, T., Kumar, A., Ravindran, M., Jacob, C. K., Roy, B. & Nazeer, M. A. (2002). Identification of *Colletotrichum acutatum* from rubber using random amplified polymorphic DNAs and ribosomal DNA polymorphisms. *Mycological Research* **106**, 215-221.
- Steyaert, R.L. (1949). Contribution à l'étude monographique de *Pestalotia* de Not. et *Monochaetia* Sacc. (*Truncatella* gen. nov. et *Pestalotiopsis* gen. nov.). *Bulletin du Jardin Botanique de l'Etat Bruxelles* **19**, 285-354.
- Steyaert, R.L. (1953). New and old species of *Pestalotiopsis*. *Transactions of the British Mycological Society* **36**, 81-89.
- Steyaert, R.L. (1955). *Pestalotia*, *Pestalotiopsis* et *Truncatella*. *Bulletin du Jardin Botanique de l'Etat Bruxelles* **25**, 191-199.
- Sullivan, R. F. & White Jr., J. F. (2000). *Phoma glomerata* as a Mycoparasite of Powdery

- Mildew. *Applied and Environmental Microbiology* **66**, 425-427.
- Sutton, B.C. (1980). *The Coelomycetes*. Commonwealth Mycological Institute, Kew, Surrey, England.
- Sutton, B.C. (1992). The genus *Glomerella* and its *Colletotrichum* anamorph in Bailey J.A. & Jeger M.J. (eds). *Colletotrichum: Biology, Pathology and Control*, pp. 1-28. CAB International, Wallingford, United Kingdom
- Sutton, B.C. & Waterston, J.M. (1966). *Phaeocytostroma sacchari*. *IMI Descriptions of Fungi and Bacteria* **9**, 87.
- Taylor, J. W. (1995). Making the Deuteromycota redundant: a practical integration of mitosporic and meiosporic fungi. *Canadian Journal of Botany* **73** (suppl.), s754-s759.
- Thaung, M.M. (1970a). New Records of Plant Diseases in Burma. *Pans* **16**, 638-640.
- Thaung, M.M. (1970b). Epiphytotic of red rot of sugarcane in Burma. *Plant Disease Reporter* **54**, 427.
- Turner, P.D. & Myint, U.H. (1980). Rubber diseases in Burma. *FAO Plant Protection Bulletin* **28**, 85-91.
- Worapong, J., Ford, E. J., Hess, W. M. & Strobel, G. A. (2001). The UV light-induced conversion of *Pestalotiopsis* to *Monochaetia* and *Truncatella*. *Agricultural Microbes Genome 2 Conference, Poster: Microbial Diversity*, Town & Country Hotel, San Diego, CA, January 17-19, 2001.